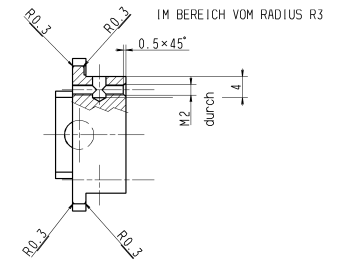
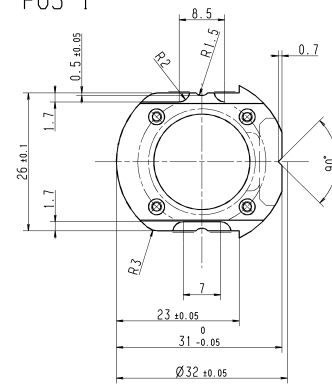
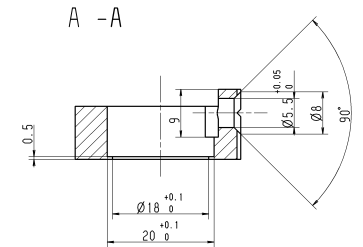
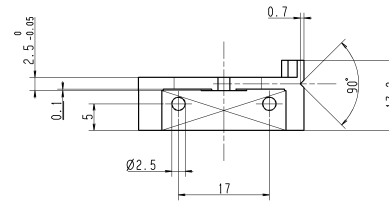
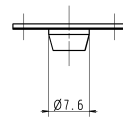
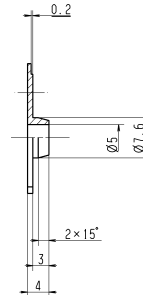
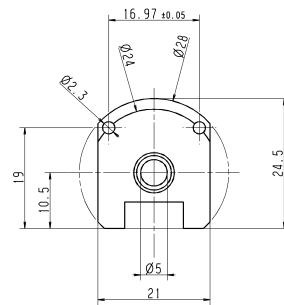


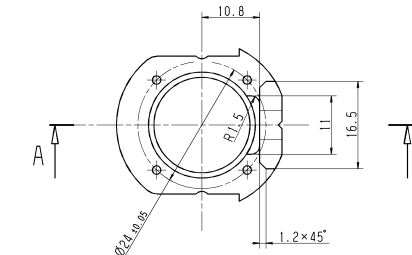
POS 1



POS 10

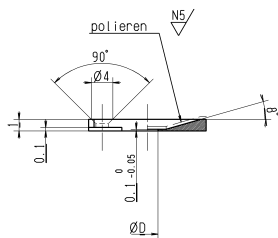
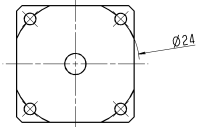


A - A

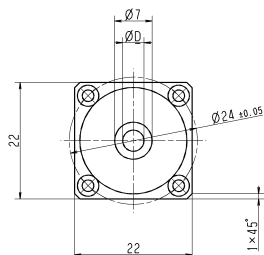
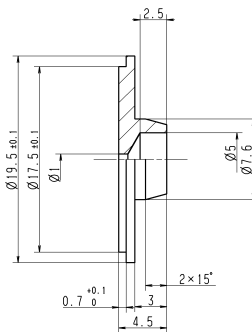


RUB A

N6 / (N5) Kanten brechen 0.1
Allgemeintoleranzen
ISO 2768 - FH



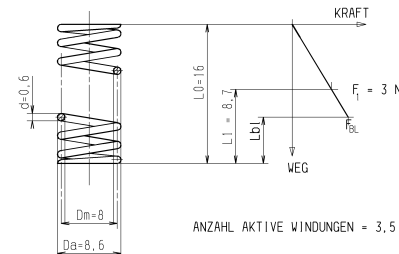
POS 12
M 4:1



	D
Pos 3	4
Pos 4	7
Pos 5	.
Pos 6	.

POS 15 AUSHÄRTEN

M --
BEIDE ENDEN SCHLEIFEN



POS 1 bis 12 N6 / Kanten brechen 0.1
Allgemeintoleranzen
ISO 2768 - FH

Pos.	Menge	Bezeichnung	Sachnummer	Benennung / Merkmale	Messst.
18	-	4	PSI 00.502.2109	ZYL. SCHR M2 x4	A4
17	-	4	SFS BN 656	LINSENSENKRSCHR. M2x5	A2
16	-	-	-	-	-
15	-	1	PSI 03.496.2060	DRUCKFEDER Dm=8 x16 dd=0.6	CuBe2
14	-	-	-	-	-
13	-	-	-	-	-
12	-	1	PSI 02.025.1022	RUND D=19.5 x4,5	1.4435
11	-	-	-	-	-
10	-	1	PSI 02.025.1030	RUND D=28 x4	1.4435
9	-	-	-	-	-
8	-	-	-	-	-
7	-	-	-	-	-
6	-	1	PSI 02.012.0010	BLECH 1 x22 x22	1.4435
5	-	1	PSI 02.012.0010	BLECH 1 x22 x22	1.4435
4	-	1	PSI 02.012.0010	BLECH 1 x22 x22	1.4435
3	-	1	PSI 02.012.0010	BLECH 1 x22 x22	1.4435
2	-	-	-	-	-
1	-	1	PSI 02.025.1035	RUND D=32 x13,2	1.4435
-	-	-	-	-	-

Pos.	Menge	Bezeichnung	Sachnummer	Benennung / Merkmale	Messst.
a	1	Gezeichnet	6.6.02	R002	2:1
b	1	Geprüft	6.6.02	R002	2:1
c	1	Archiviert	14.08.2003	0200	
Anlage		SLS X11M ESEA	Ersetzt durch		
Baugruppe		PEEM	Ersetzt durch		
			Stückl. Nr.		Blatt Nr.
			Zusammenst. Nr.		von