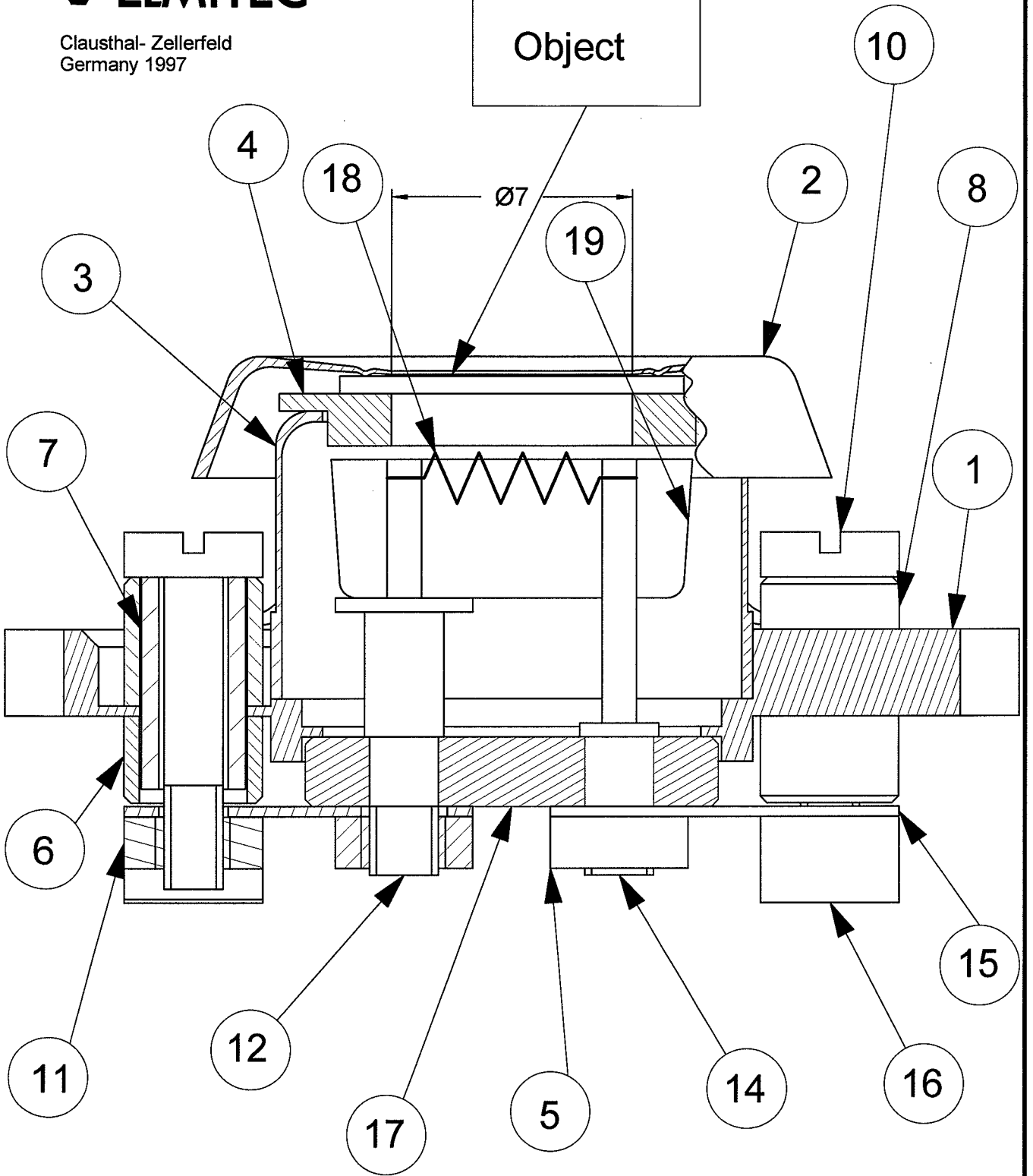
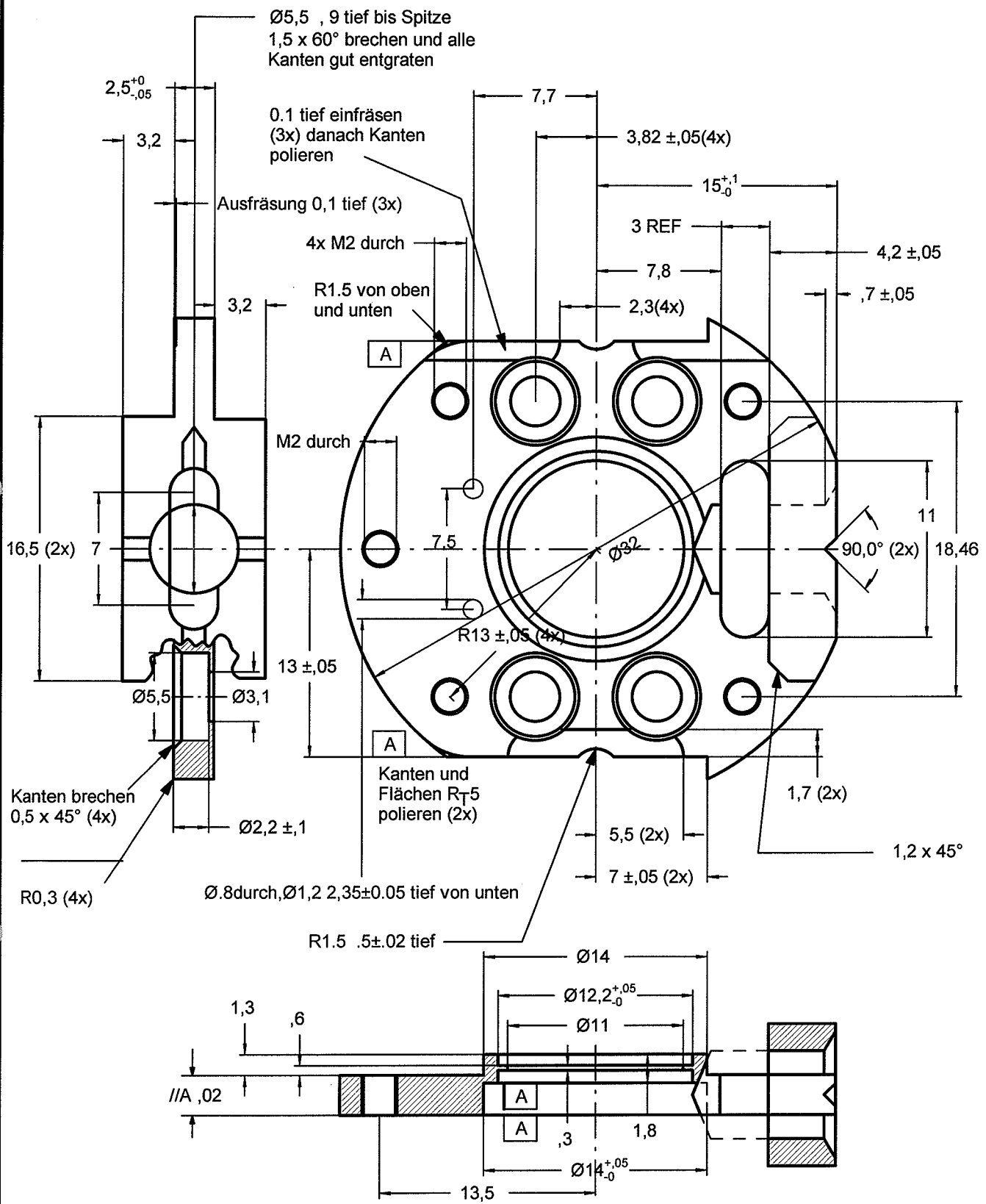


Object



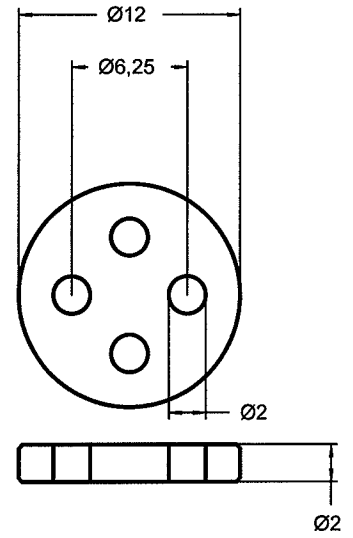
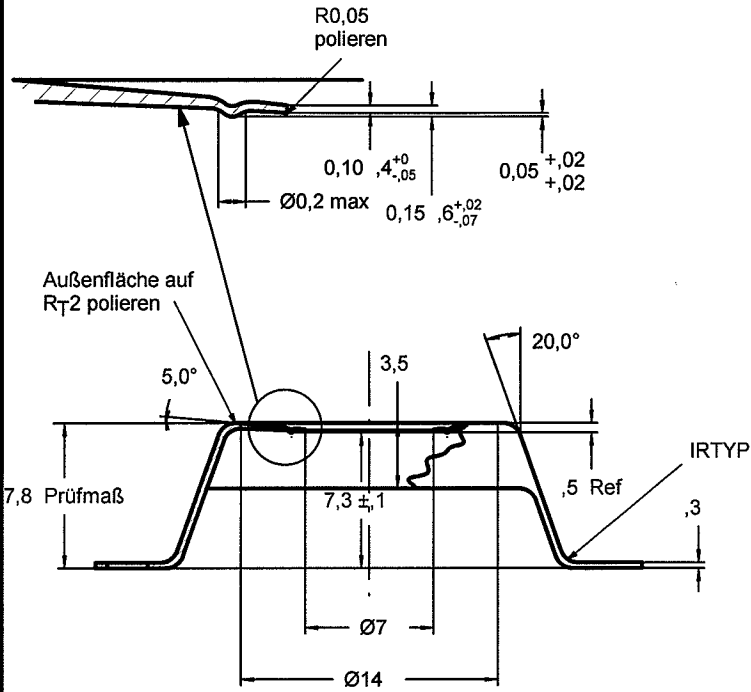
For ordering spare parts:
Please use number:
100-006-2A-..

		Oberfläche	Maßstab	6:1
		Datum	Name	
		Bearb.		Objekthalter
		Gepr.		
		Norm		
				100-006-2A-0
Zust.	Änderung	Datum	Name	Blatt
				Bl.

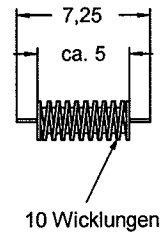
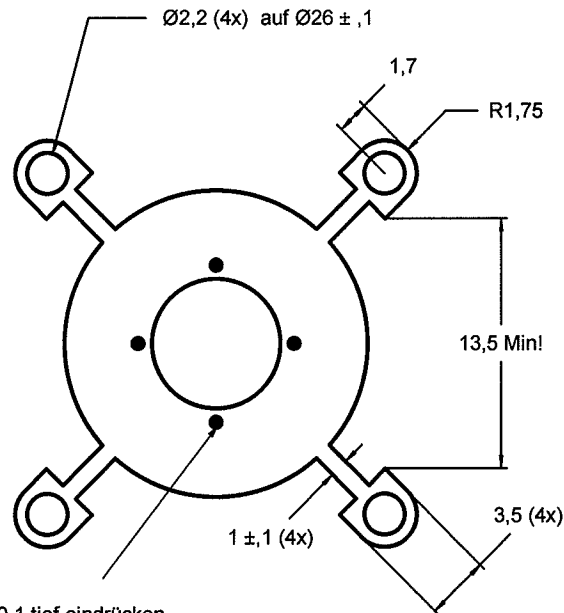


**Wichtig: alle Kontakt-
 kanten unbedingt
 für einwandfreien
 Sitz polieren!**

Mat.: Contimet 35 Titanium		Oberfläche		Maßstab 4:1	
		Datum		Name	
		Bearb.		Basis	
		Gepr.			
		Norm.			
				100-006-2A-1	
Zust.	Änderung	Datum	Name	Blatt	
				Bl.	



Teil 17 (1x)
Mat.: Al₂O₃ Keramik

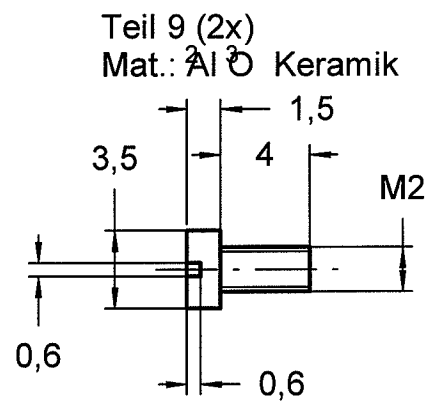
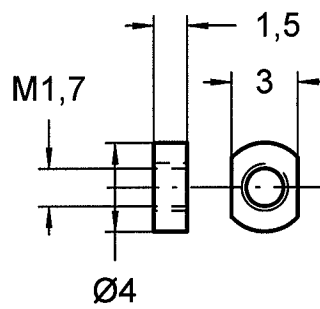
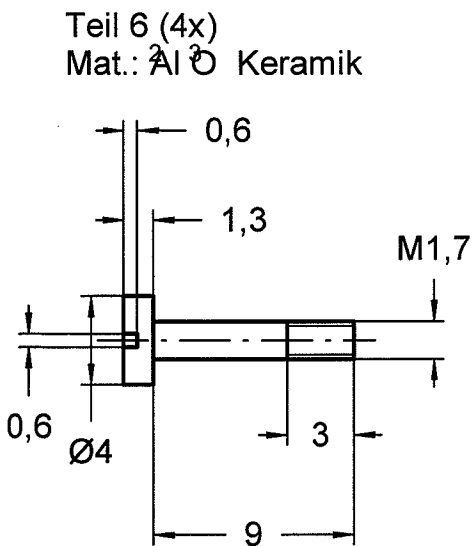
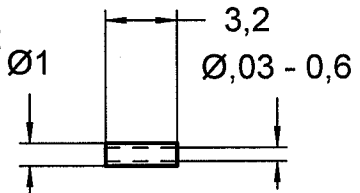
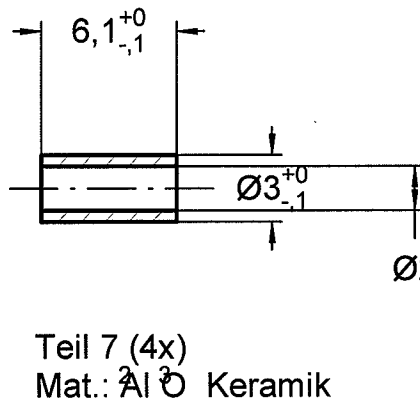
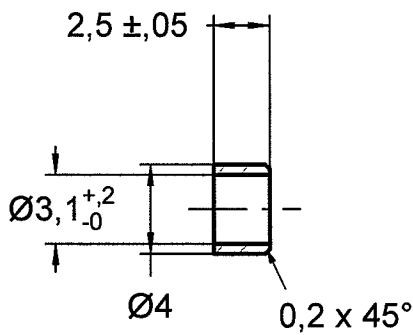
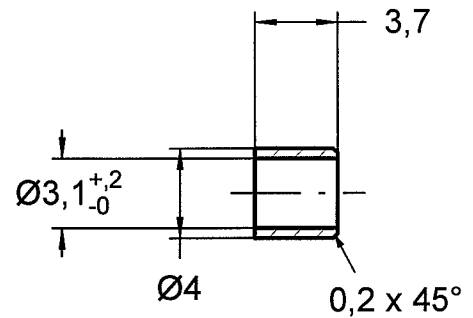
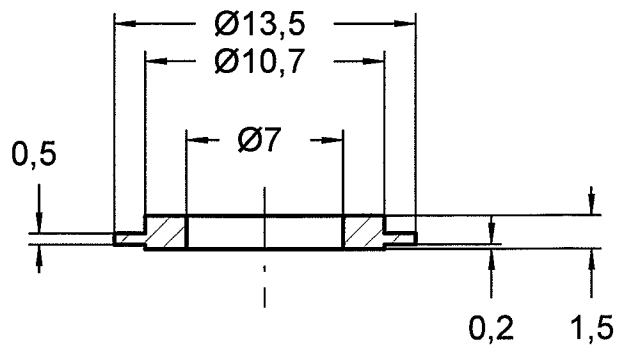
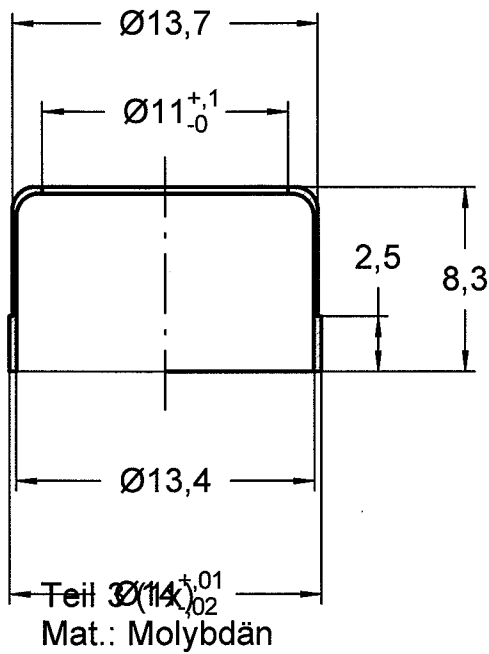


Teil 18 (1x)
Mat.: Ø0,15 W-Draht

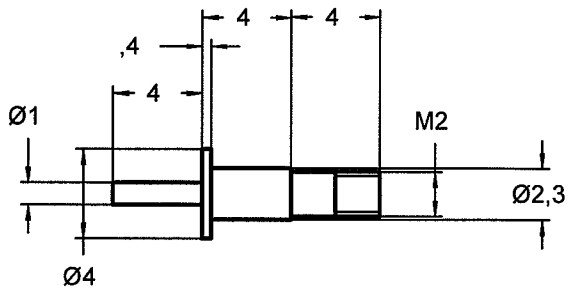
4x Spitze 0,1 tief eindrücken,
innen Fläche auf etwa Ø0.2
flach schleifen II zur Basis und
max 0,05 hoch
innen Material auf Dicke 0,1 bei
Ø7 schleifen

Teil 2 (1x)
Mat.: 0.3 Molybdän
Blech

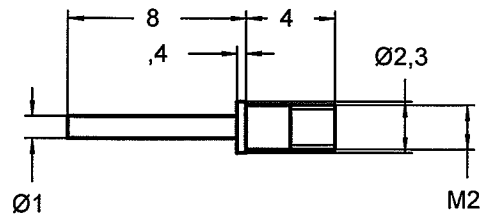
		Oberfläche	Maßstab	4:1,8:1	
		Datum	Name		
		Bearb.			Objekthalter
		Gepr.			
		Norm			
					Blatt
		100-006-2A-2			Bl.
Zust.	Änderung	Datum	Name		



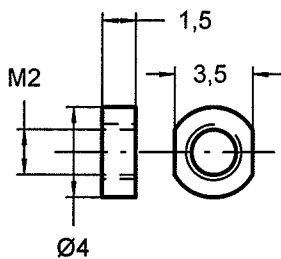
		Oberfläche		Maßstab 4:1	
		Datum		Name	
		Bearb.			
		Gepr.			
		Norm			
				Objekthalter	
				Blatt	
				100-006-2A-3	
				Bl	
Zust.	Änderung	Datum	Name		



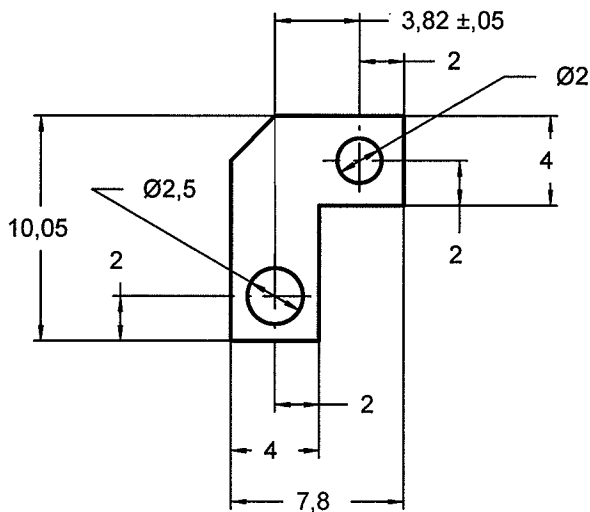
Teil 12 (1x)
Mat.: Molybdän



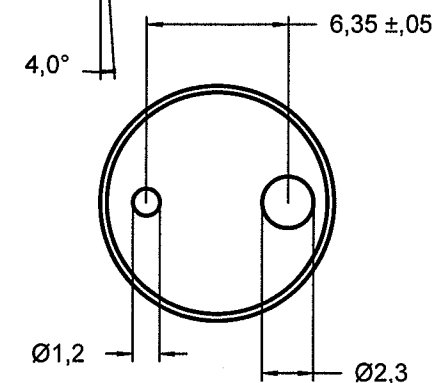
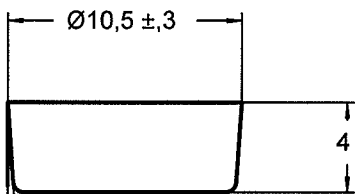
Teil 14 (1x)
Mat.: Molybdän



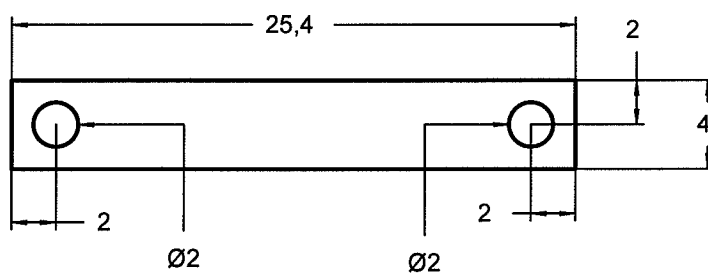
Teil 5 (2x)
Mat.: Molybdän



Teil 15 (2x)
Mat.: 0,3 Molybdän Blech



Teil 19 (1x)
Mat.: 0.1 Molybdän Blech
tiefgezogen



Teil 16 (4x)
Mat.: 0.05 WRe26% Blech (3x)
0.05 WRe5% Blech (1x)

		Oberfläche		Maßstab 4:1	
		Datum		Name	
		Bearb.		Objekthalter	
		Gepr.			
		Norm			
				100-006-2A-4	
				Blatt	
				Bl	
Zust.	Anderung	Datum	Name		