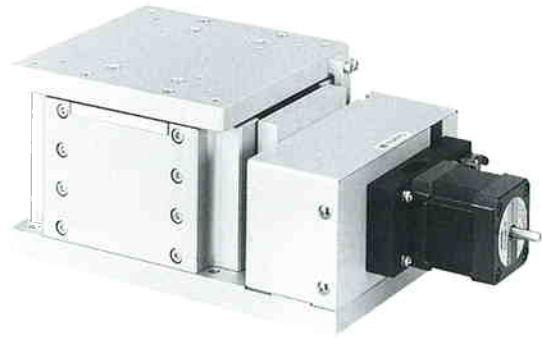


ZA13-03

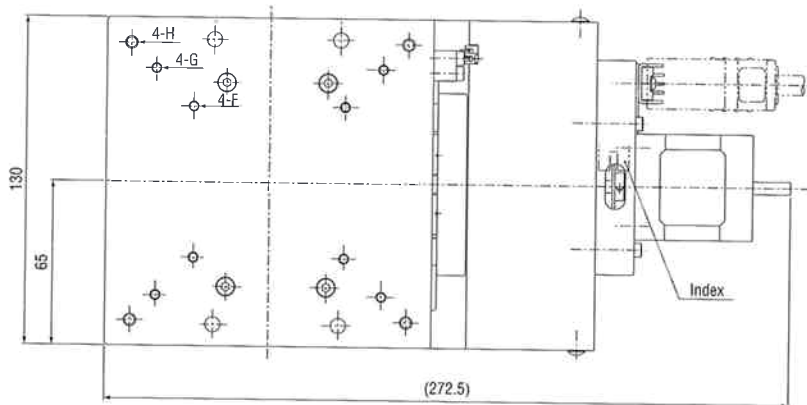
130 × 130 Aluminum Alloy Crossed Roller, Ball Screw 1 / 2 Wedge

Table Size	130 mm × 130 mm
Guidance Mechanism	Precision Crossed Roller
Motion Range	± 12.5 mm
Lead Mechanism	Ball Screw, 1 / 2 wedge
Repeatability	± 1 μm
Verticality	10 μm / 25 mm
Lost Motion	2 μm
Maximum Speed	5 mm / sec
Load Capacity (Horizontally)	15 kg
Material	Aluminum Alloy
Finish	Natural Color, Anodized Mat
Weight	6.3 kg

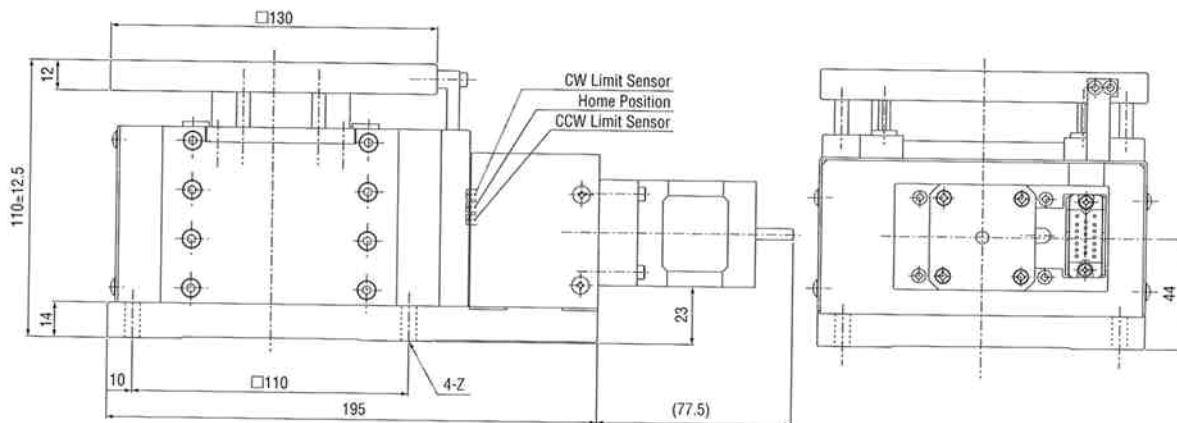
Conversion spacer-see p. 281



Actuator	5-phase stepping motor (1000 p / rev)
Resolution	0.5 μm / step (Half Step Mode)
Connection	Type "F1" (see p. 274)
Cables	Type "CA" (see p. 275)



	Size	Depth
F	Square 60, M4	8
G	Square 90, M4	8
H	Square 110, M5	8
Z	φ 6	thru



Scale 1:3

Manual Stages	Translation	X
	Translation	X · Y
	Translation	Z
	Rotation	
	Swivel	
Motorized Stages	Translation	X
	Translation	X · Y
	Translation	Z
	Rotation	
	Swivel	
Drivers and Controllers	Motor Drivers	
	Motor Controllers	
	Wiring Diagrams	
	Conversion Spacers	