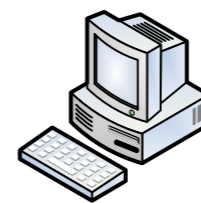


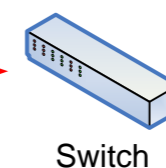
Current System

1 Gigabit Ethernet connection per Back End Board (2 per Module).

Option: 2 Gigabit Ethernet connections per Back End Board (4 per Module).



PC / Storage



Switch

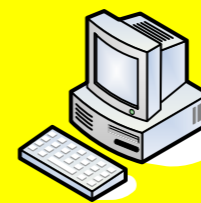
1x Gb Ethernet

1x Gb Ethernet

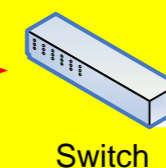
Future Options (equipped for testing now)

1 10Gigabit Ethernet connection per Back End Board (2 per Module).

Option: 2 10Gigabit Ethernet connections per Back End Board (4 per Module).



PC / Storage



Switch

1x 10Gb Ethernet

1x 10Gb Ethernet