

# DRS4 Evaluation Board User's Manual

Board Revision 5.1  
as of January 2015

Last revised: September 26, 2018



Stefan Ritt  
Paul Scherrer Institute  
CH-5232 Villigen PSI  
Switzerland

Email: [stefan.ritt@psi.ch](mailto:stefan.ritt@psi.ch)  
Phone: +41 56 310 3728

## Revision History

<b>Date</b>	<b>Modification</b>
2 March 09	Initial Revision
27 April 09	Mention input range, added timing calibration description
3 Aug. 09	Added LED description
12 July 10	Updated documentation for evaluation board V3
12 Sept. 10	Added maximum input voltage
16. Feb. 12	Added info for external connectors
5. Dec. 12	Changed LED description, added OSX part
11. Jan 13	Changed binary format for multi-board functionality
18. Dec. 13	Updated documentation for evaluation board V5
28. Feb. 14	Added note on clock distribution
6. Mar. 14	Added formulas for inter-channel time alignment
26. Sept. 14	Added range in binary format
2. May 16	Changed binary format to contain scalers
25. Aug. 16	Changed schematics to V5.1
9. May 18	Added pictures of top and bottom of V5.1 board
26. Sept. 18	Changed description of Trigger OUT signal

# Table of Contents

Revision History.....	2
Table of Contents .....	3
1. Introduction.....	4
1.1. Board description.....	4
1.2. LEDs .....	6
1.3. Firmware Description.....	6
2. Installation.....	9
2.1. Windows XP.....	9
2.2. Windows 7.....	12
2.3. Upgrading from software .....	13
2.4. Linux .....	14
2.5. Macintosh OSX .....	16
3. Running the Board.....	17
3.1. Command line Interface “drsc1” .....	17
3.2. Oscilloscope application “DRSOsc”.....	17
3.3. Multi-board configuration .....	24
4. Development Hints .....	26
4.1. Power Supply.....	26
4.2. Analog Input.....	27
4.3. Control Voltages.....	28
4.4. ADC Clock .....	28
4.5. Calibration .....	28
5. DRS4 Evaluation Board V5.1 Schema.....	29
6. DRS4 Evaluation Board V5.1 Bill of Materials.....	36

# 1. Introduction

The DRS4 chip, which has been designed at the Paul Scherrer Institute, Switzerland by Stefan Ritt and Roberto Dinapoli is a Switched Capacitor Array (SCA) capable of digitizing eight channels at sampling speeds up to 5 GSPS and 1024 sampling points. This chip is available through the PSI technology transfer program for other institutes and organizations. In order to simplify the design process to integrate the DRS4 chip into custom electronics, an evaluation board has been designed, which demonstrates the basic operation of the chip. It has SMA connectors for four input channels CH1 to CH4, an USB 2.0 connector and MMCX connectors for triggering and clock synchronization (Figure 1). The board is powered through the USB port and contains an on-board trigger logic. It comes with MS Windows®, Linux and Mac OSX drivers and two application programs. It is basically equivalent to a four channel 5 GSPS digital oscilloscope.

This manual describes the software installation, the usage of the application programs, and gives hints for developers seeking to build new electronics around the DRS4 chip.

## 1.1. Board description

Since the DRS4 chip has differential inputs, the board uses four active buffers (THS4508 from Texas Instruments®) to convert the 50-Ohm terminated single ended inputs into differential signals. Analog switches in front of the buffers (ADG901 from Analog Devices®) are used to de-couple the inputs during calibration. Two reference voltages are generated by the on-board 16-bit DAC to measure the offset and gain of all DRS4 storage cells for calibration. The four analog inputs are AC coupled and have a input range of 1 V peak-to-peak. The DRS4 is read out with a 14-bit ADC (AD9245 from Analog Devices®) and a FPGA (Xilinx® Spartan 3). The USB connection is implemented with a micro controller (Cypress® CY2C68013A). The high speed modulus of the USB 2.0 bus allows for data transfer rates of more than 20 MB/sec.

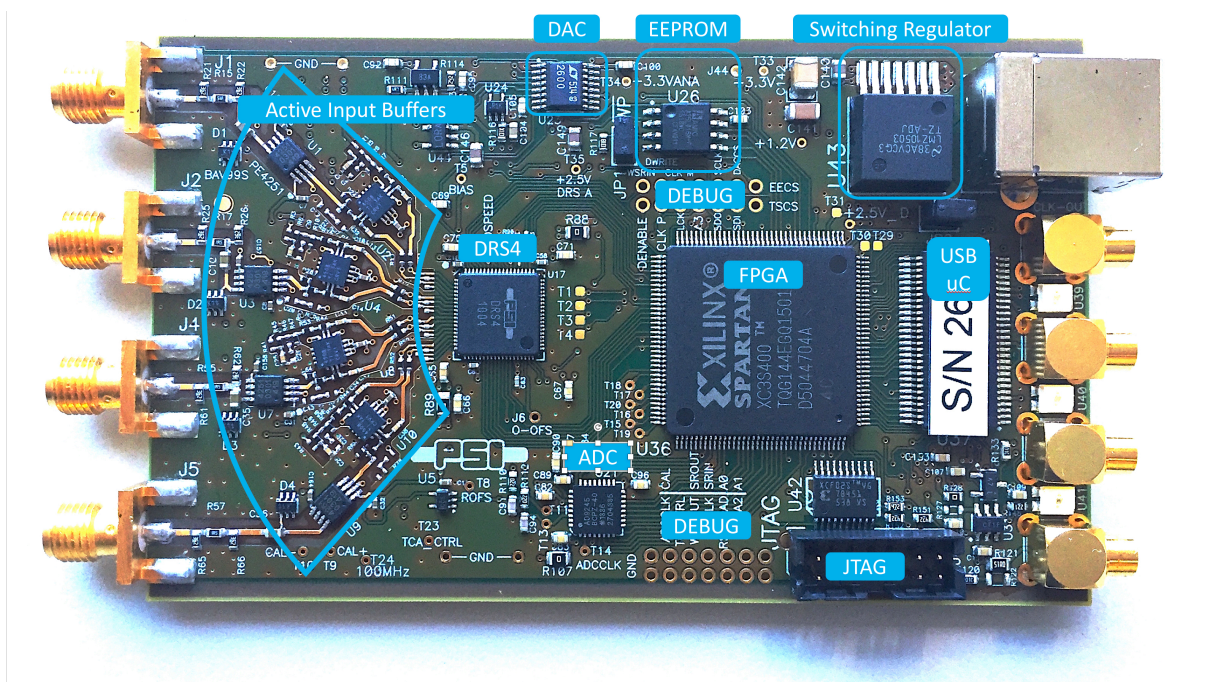


Figure 1: Picture of the DRS4 Evaluation Board V5.1 with different components

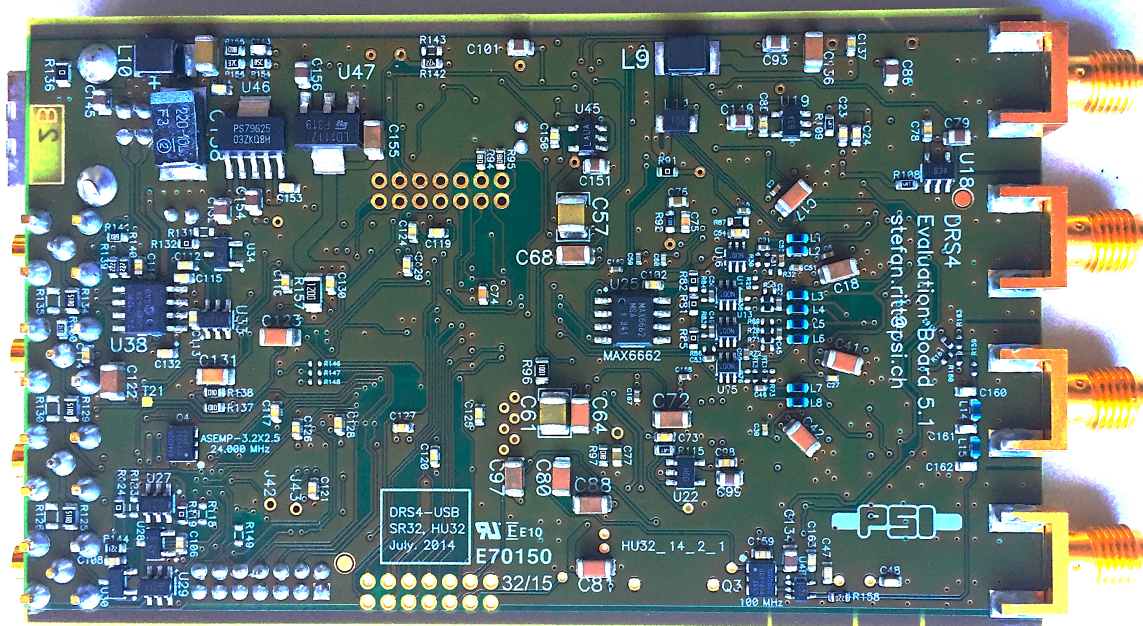


Figure 2: Picture of the DRS4 Evaluation Board V5.1 bottom

For trigger purposes and inter-board synchronization, four MCX connectors are available, which can be seen on the right side of Figure 1. The **Trigger IN** works as an external trigger much like the one of an oscilloscope. The electrical standard is 5V TTL. Although a 50  $\Omega$  termination is possible, the resistor is not soldered by default. This allows using weaker sources, which cannot drive 5V into a 50  $\Omega$  load. Reflections on this line usually do not matter, since the first leading edge of the trigger is used. To connect a SMA cable to the trigger input, a commercial adapter can be used like the one shown in.



Figure 3: MCX-SMA adapter which can be obtained for example from [www.digikey.com](http://www.digikey.com) (part number ACX1348-ND)

The **Trigger OUT** signal sends pulse whenever the board triggers via the internal hardware trigger. The signal goes high when the trigger occurs and goes low when the readout of the board via the PC has finished and the board has been restarted. This allows synchronization with external trigger logic, since the signal can be used as a “busy” signal. The signal standard is 5V TTL. When terminated with 50  $\Omega$ , the signal amplitude will only reach about 2V. As written above, in most cases the termination should not be necessary.

The **Clock IN/OUT** signals will be supported in a future firmware version to allow a better synchronization between different boards for multi-board DAQ systems.

Four on-board discriminators with programmable level allows for self triggering on any of the four input channels, or a combination of channels supporting coincidences for example. A 1 MBit EEPROM (25LC1025 from Microchip®) is used to store the board serial number and calibration information. Two 14-pin headers carry all important logical signals which allow

easy debugging with a logic analyzer or oscilloscope. A JTAG adapter can be used to update the FPGA firmware through a Xilinx® Platform Cable Adapter.

The specifications of the board inputs is summarized in following table:

<b>Analog inputs</b> Termination Input range Maximum allowed input voltage DC Long pulse (<2μs) Short pulse (<200ns)	50 Ω 1 V p-p ± 10V ± 20V ± 30V	AC coupled
<b>Trigger input/Clock input</b> Termination Maximum allowed input voltage High Level Input Voltage	high impedance, optionally 50 Ω -0.5 V to +5.5 V 2.5 V (min)	5 V TTL compatible
<b>Trigger output/Clock output</b> Level	5V TTL	

## 1.2. LEDs

The DRS4 evaluation board is equipped with three LEDs. They are operated by the micro controller and the FPGA and have following meaning:

LED	Meaning
Blue	This LED becomes green when the on-board micro-controller booted successfully. If this LED stays dark, there is either no power or the micro-controller lost its program, which requires a re-programming of the EEPROM.
Green	When the on-board FPGA boots correctly this LED becomes lit. If it stays dark, it might be that the FPGA program was lost and requires re-programming. After booting, this LED indicates the board status. If lit, the DRS4 chip is active and sampling data. If stopped by software or a trigger, this LED turns off. A special pulse stretcher ensures that even in high trigger rate environments this LED does not flash with more than ~10Hz so the blinking can still be seen by eye.
Yellow	When lit, this LED indicates a error condition

## 1.3. Firmware Description

Both the Windows and the Linux distribution contain a subdirectory “firmware” which contains the FPGA and Microcontroller firmware for the DRS4 Evaluation Board. The FPGA firmware is written in pure VHDL, thus making it easy to port it to other FPGA devices such as Altera® or Lattice®. Only a few Xilinx® basic components such as clock managers and I/O blocks have been instantiated and must be adapted when another FPGA manufacturer than Xilinx® is chosen. The FPGA source code is contained in several files with following contents:

src/drs4_eval1.vhd	Top level entity. Routing of clock signals, global reset signal,
--------------------	--

	LEDs and LEMO input
src/drs4_eval1_app.vhd	Main file containing state machines for DRS4 readout, serial interface to DAC, EEPROM and temperature sensor, trigger logic and reference clock generation
src/usb_dpram.vhd	Instantiates block ram for waveform storage
src/usb_racc.vhd	Interface to CY2C68013A microcontroller in slave FIFO mode. Implements a set of status and control registers through which the main application can be controlled
src/usr_clocks.vhd	Generates 66 MHz, 132 MHz, 264 MHz and a phase shifted 66 MHz clock out of the 33 MHz quartz input frequency via the Xilinx® Digital Clock Managers (DCM)
ucf/drs4_eval1.ucf	Constraint file. Assigns package pins and defines clock constraints
3s400/drs4_eval1.ise	Xilinx® ISE 9.2i project file
3s400/drs4_eval1.bit	Compiled firmware image directly for Spartan 3s400 FPGA
3s400/drs4_eval1.mcs	Compiled firmware image for FPGA EEPROM XCF02S
3s400/drs4_eval1.ipf	Xilinx® Impact project file to program FPGA via download cable

The firmware for the USB microcontroller from Cypress® is written in C and must be compiled with the Keil® 8051 C compiler. It contains the standard include and library files from the Cypress EZ-USB® development kit plus some DRS specific files:

CY7C68013A/drs_eval.c	Main micro controller firmware file
CY7C68013A/dscr.a51	USB descriptor tables
CY7C68013A/drs_eval.hex	Compiled firmware file (Intel HEX format)
CY7C68013A/drs_eval1.iic	Compiled firmware file (For Cypress EZ-USB Console download)
CY7C68014A/*	Remaining files are standard files from EZ-USB development kit

The FPGA firmware implements a set of control and status registers, through which the DRS4 can be controlled and read out. The mapping of the control registers is as follows:

#	Ofs.	Bit	Name	Comment
0	0x00	0	start_trig	Write a "1" to start the domino wave
0	0x00	1	reinit_trig	Write a "1" to stop & reset the DRS chip
0	0x00	2	soft_trig	Write a "1" to stop the DRS chip & read the data to RAM
0	0x00	3	eprom_write_trig	Write contents of RAM into EEPROM (32kB page)
0	0x00	4	eprom_read_trig	Read contents of EEPROM into RAM (32kB page)
0	0x02	18	led	1=on, 0=blinks once at beginning of DRS chip readout
0	0x02	19	tcal_en	Switch on (1) / off (0) 100 MHz calib. sig. for DRS chips
0	0x02	21	transp_mode	1=send DRS inputs to outputs ("transparent mode")
0	0x02	22	enable_trigger1	Write a "1" to enable external trigger (LEMO)

0	0x02	23	readout_mode	0:start from first bin, 1:start from domino stop
0	0x02	24	neg_trigger	1=trigger on high to low transition
0	0x02	25	acalib	Write "1" to enable amplitude calibration
0	0x02	26	refclk_source	0: FPGA, 1: external MCX CLKIN reference clock
0	0x02	27	dactive	0:stop domino wave during readout, 1:keep it running
0	0x02	28	standby	1: put chip in standby mode
1	0x04	31..16	DAC0	Set DAC 0 (=A, ROFS)
1	0x06	15..0	DAC1	Set DAC 1 (=B, CMOFS)
2	0x08	31..16	DAC2	Set DAC 2 (=C, CAL-)
2	0x0A	15..0	DAC3	Set DAC 3 (=D, CAL+)
3	0x0C	31..16	DAC4	Set DAC 4 (=E, BIAS)
3	0x0E	15..0	DAC5	Set DAC 5 (=F, TLEVEL)
4	0x10	31..16	DAC6	Set DAC 6 (=G, O-OFS)
4	0x12	15..0	DAC7	Set DAC 7 (=H, -)
5	0x14	31..24	configuration	Bit0: DMODE, Bit1: PLEN, Bit2: WSRLOOP
5	0x14	23..16	channel_config	1=1x8k,0x11=2x4k,0x33=4x2k,0xFF=8x1k
5	0x16	15..8	adclk_phase	ADC clock phase
5	0x16	7..0		
6	0x18	31..16	trigger_delay	Trigger delay in ticks of roughly 2.3 ns
6	0x1A	15..0	sampling_freq	Sampling frequency in ticks (=1024/f <sub>samp</sub> *0.120-2)
7	0x1E	31..16	trigger_config	Trigger configuration
7	0x1E	15..0	eprom_page	Page number for EEPROM communication

While the mapping of the status registers is like this:

#	Ofs.	Bits	Name	Comment
0	0x00	31..16	board_magic	0xCODE, Magic number for DRS board identification
0	0x02	15..8	board_type	7: Eval. Board V3, 8: Eval. Board V4, 9: Eval Board V5
0	0x02	7..0	drs_type	4 for DRS4
1	0x04	0	running	"1" while domino wave running or readout in progress
2	0x08	31..16	stop_cell	position of cell where sampling stopped at last trigger
8	0x20	31..16	temperature	temperature in 0.0625 deg. C units
9	0x24	31..16	serial_cmc	Board serial number
9	0x26	15..0	version_fw	firmware version (SVN revision)
10	0x28	31..16	scaler_1hi	Scaler for input #1
10	0x2A	15..0	scaler_1lo	
11	0x2C	31..16	scaler_2hi	Scaler for input #2
11	0x2E	15..0	scaler_2lo	
12	0x30	31..16	scaler_1hi	Scaler for input #3
12	0x32	15..0	scaler_1lo	
13	0x34	31..16	scaler_1hi	Scaler for input #4
13	0x36	15..0	scaler_1lo	
14	0x38	31..16	scaler_1hi	Scaler for trigger
14	0x3a	15..0	scaler_1lo	

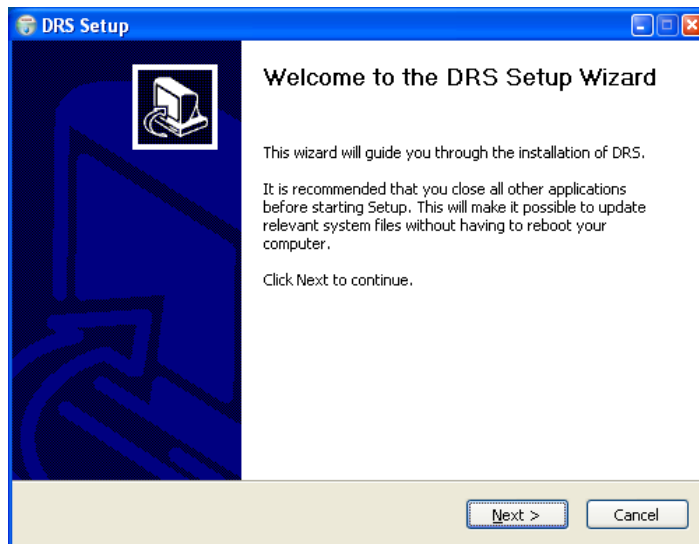
All registers are implemented as 32-bit registers, so they can be mapped easily into some VME address space for example if one decides to build a VME board containing the DRS4.



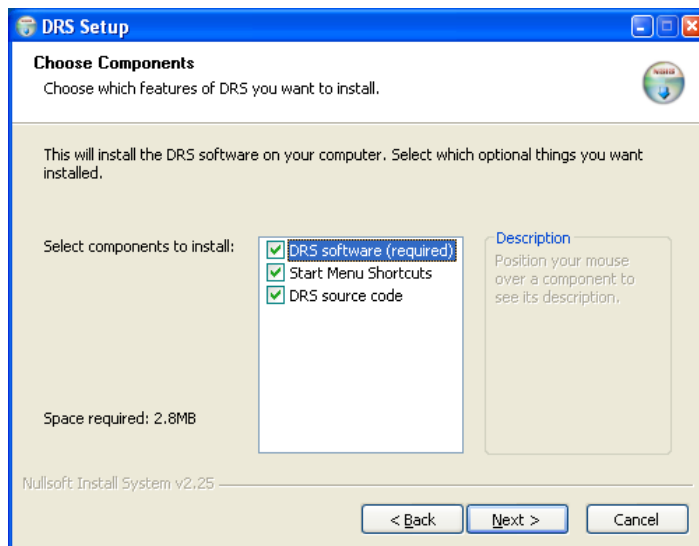
## 2. Installation

### 2.1. Windows XP

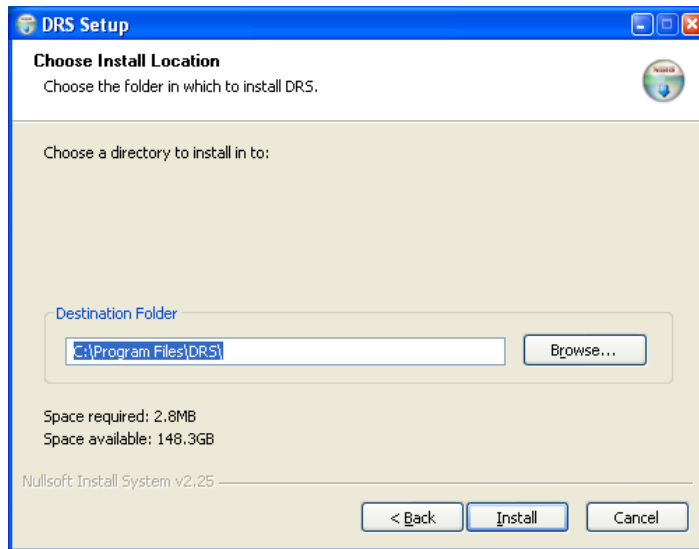
Under MS Windows® it is important to install the necessary driver before connection the DRS4 Evaluation Board with the PC. The current distribution can be downloaded from <http://www.psi.ch/drs/download> . The Windows version contains a single program **drs-xx.exe** (where **xx** is the version) which can be executed to install the driver, applications, documentation and source code. Executing this file starts the installer:



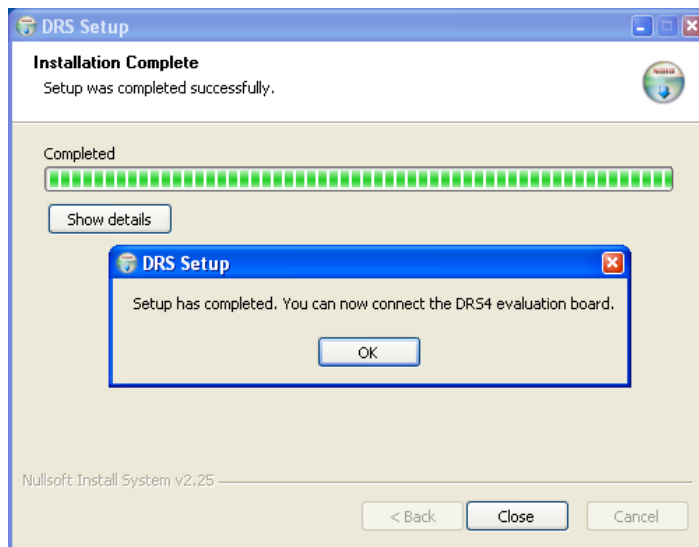
You can select which components to be installed:



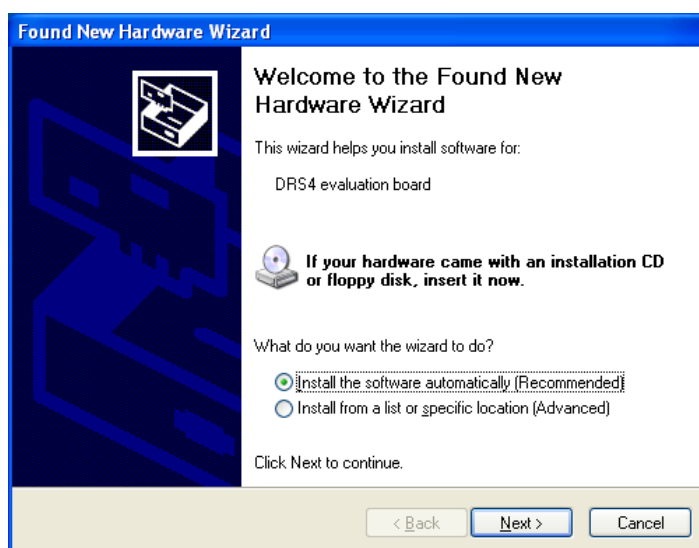
Then you can select the installation directory:



After the installer has finished, you can connect the DRS4 Evaluation Board to the Computer:

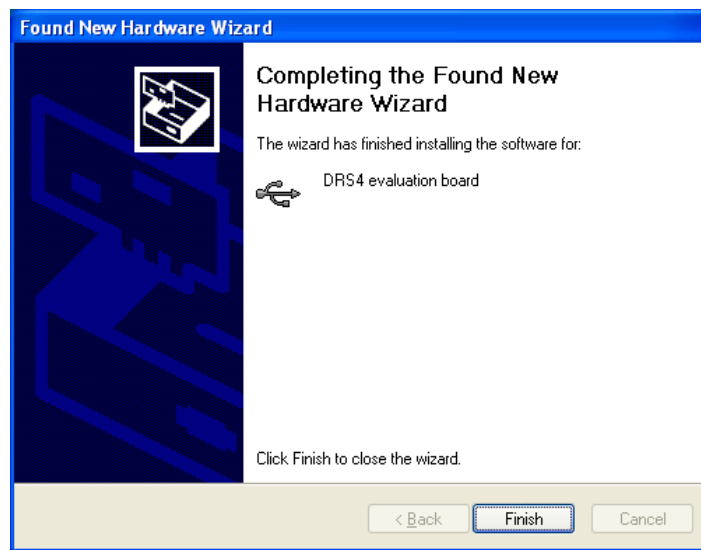


Now you will see the “Found New Hardware” dialog:

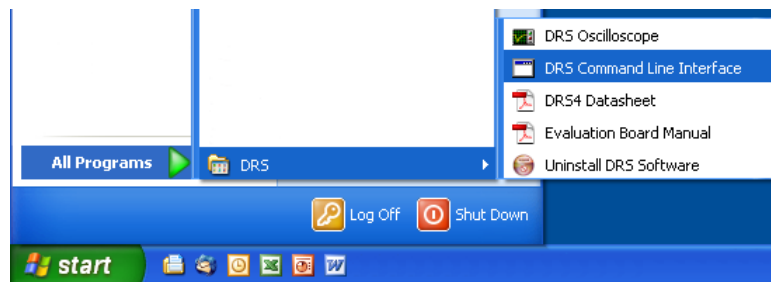


Where you can click “Install the software automatically” and then click “Next”.

After successful installation of the driver, you will see the following window:



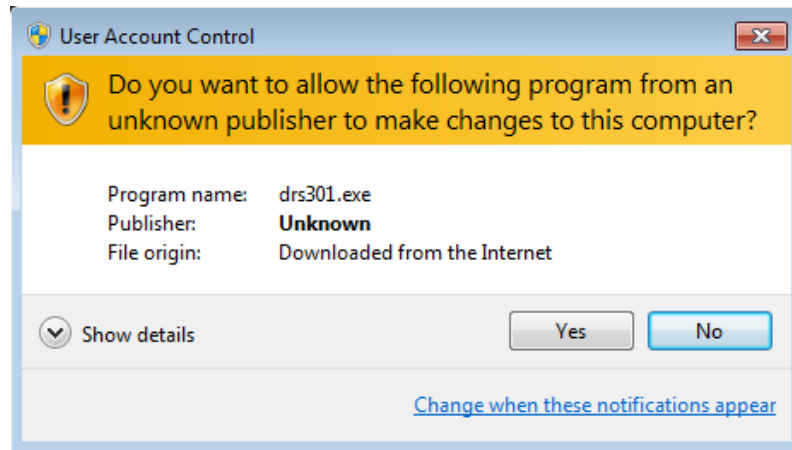
And a new group in your Start Menu:



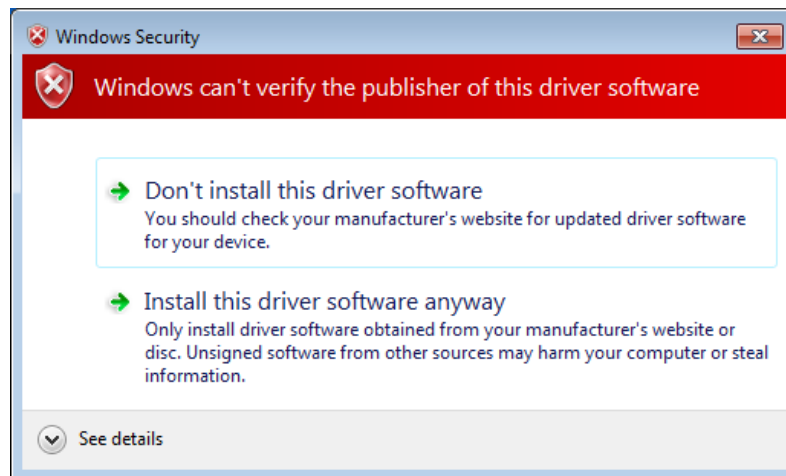
The software comes with two applications, a command line interface and an oscilloscope. These applications are explained in section 2.5.

## 2.2. Windows 7

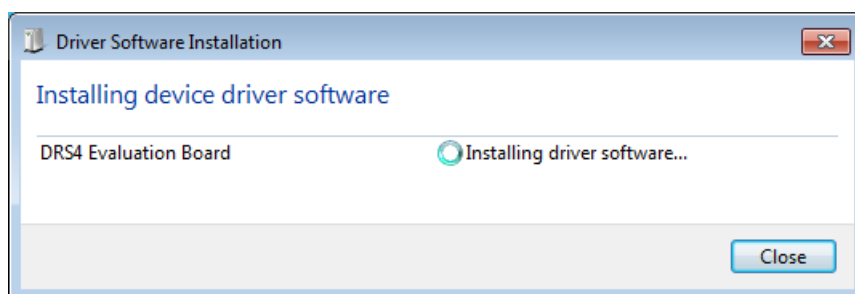
The installation under Windows 7 (32 and 64 bit) is basically the same than for Windows XP. You need the DRS software version 3.0.1 or later if you are using a 64-bit system, since version 3.0.0 and prior does not contain the 64-bit version of the **libusb** library. When you start the software installation, you get an additional screen which you have to confirm:



Make sure that you are logged in as an administrator to install the software. During the installation process, you will see a notice about some unverified driver software. Please select *“Install this driver software anyway”* to install the driver.



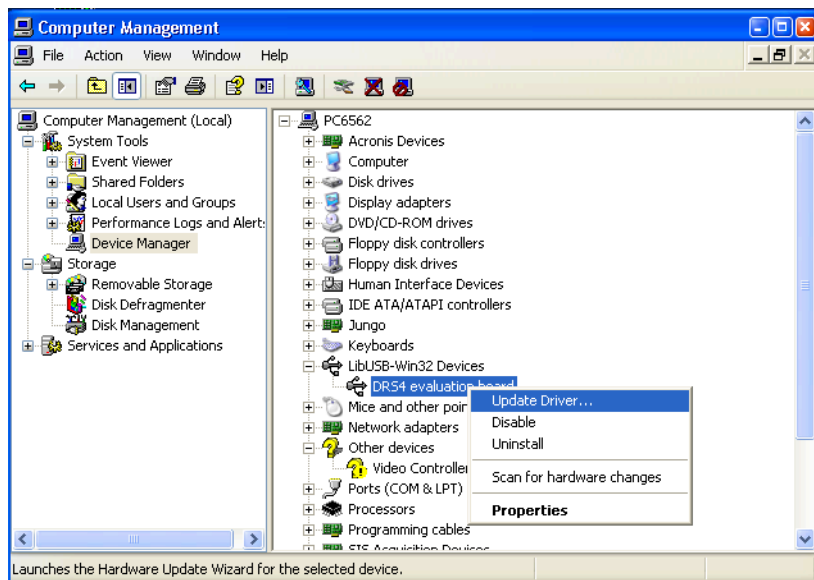
After the software has been installed, you can connect the DRS4 Evaluation Board to the computer. The driver installation should then start automatically and you will see this notification:



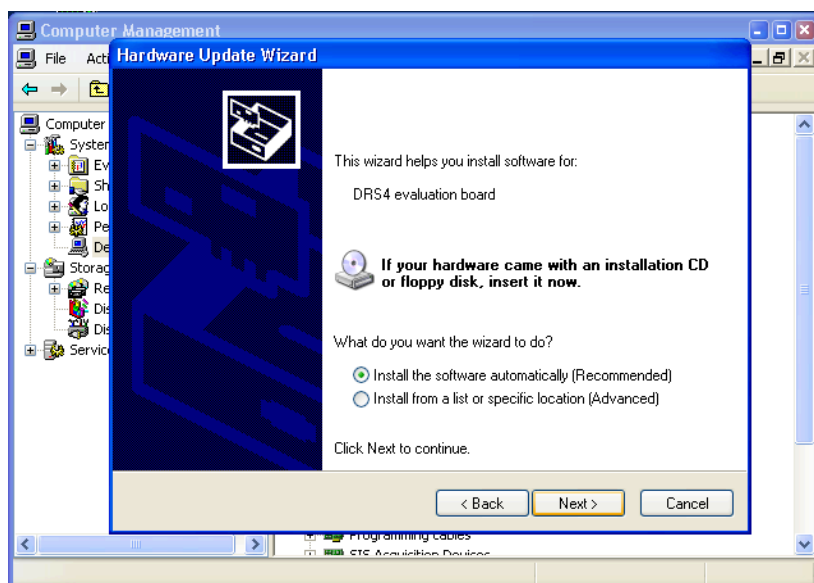
When this has finished, you can start the “drscl” and “drsosc” programs.

### 2.3. Upgrading from software

Prior to software version 5.0, a different USB driver has been used. If one wants to install the current version over a pre-5.0 software version, one has to tell Windows to update the USB driver after the 5.0 software has been installed as shown in the previous chapter. This is done via the Device Manager, which can be accessed through Computer Management. If an old driver is installed, there will be an entry “DRS4 evaluation board” under the group “**LibUSB-Win32 Devices**”. To update the driver, do a right mouse click on the board and select “**Update Driver...**” from the context menu:



Click “**No**” on the next page asking to connect to Windows Update, then select “**Install the software automatically**”:



This will update the USB driver for the DRS4 board correctly. The board will now be listed under “**libusb (WinUSB) devices**” instead of “**LibUSB-Win32 Devices**”.

## 2.4. Linux

The drivers and applications are distributed for Linux in source code and must be compiled on each system. First untar the tar ball:

```
[/usr/local]$ tar -xzf drs-1.0.tar.gz
drs-1.0/
drs-1.0/doc/
drs-1.0/doc/DRS4_rev06.pdf
drs-1.0/doc/manual.pdf
drs-1.0/include/
drs-1.0/include/ConfigDialog.h
drs-1.0/include/DOFrame.h
drs-1.0/include/DOScreen.h
```

Then change the directory and do a „make“. Note that to compile the oscilloscope application it is necessary to have the wxWidgets package version 2.8.9 or later installed. You can obtain this package in source form from <http://www.wxwidgets.org/downloads/>. If this package is present, you can change to the drs directory and issue a make:

```
[/usr/local]$ cd drs-1.0
[/usr/local/drs-1.0]$ make
g++ -g -O2 -Wall -Wuninitialized -fno-strict-aliasing -Iinclude -DOS_LINUX
-DHAVE_LIBUSB -c src/musbstd.c
g++ -g -O2 -Wall -Wuninitialized -fno-strict-aliasing -Iinclude -DOS_LINUX
-DHAVE_LIBUSB -c src/mxml.c
...
```

Now you can connect the DRS4 board to the PC. On systems where the “lsusb” tool is installed, one should be able to find the DRS4 evaluation board after connecting it with following command:

```
[/usr/local/drs-1.0]$ /sbin/lsusb -d 04b4:1175 -v
```

```
Bus 005 Device 005: ID 04b4:1175 Cypress Semiconductor Corp.
```

```
Device Descriptor:
```

```
  bLength                18
  bDescriptorType        1
  bcdUSB                  2.00
  bDeviceClass            0 (Defined at Interface level)
  bDeviceSubClass         0
  bDeviceProtocol         1
  bMaxPacketSize0        64
  idVendor                0x04b4 Cypress Semiconductor Corp.
  idProduct               0x1175
  bcdDevice               0.01
  iManufacturer          1 S. Ritt PSI
  iProduct                2 DRS4 Evaluation Board
  iSerial                 3 REV1
  bNumConfigurations     1
```

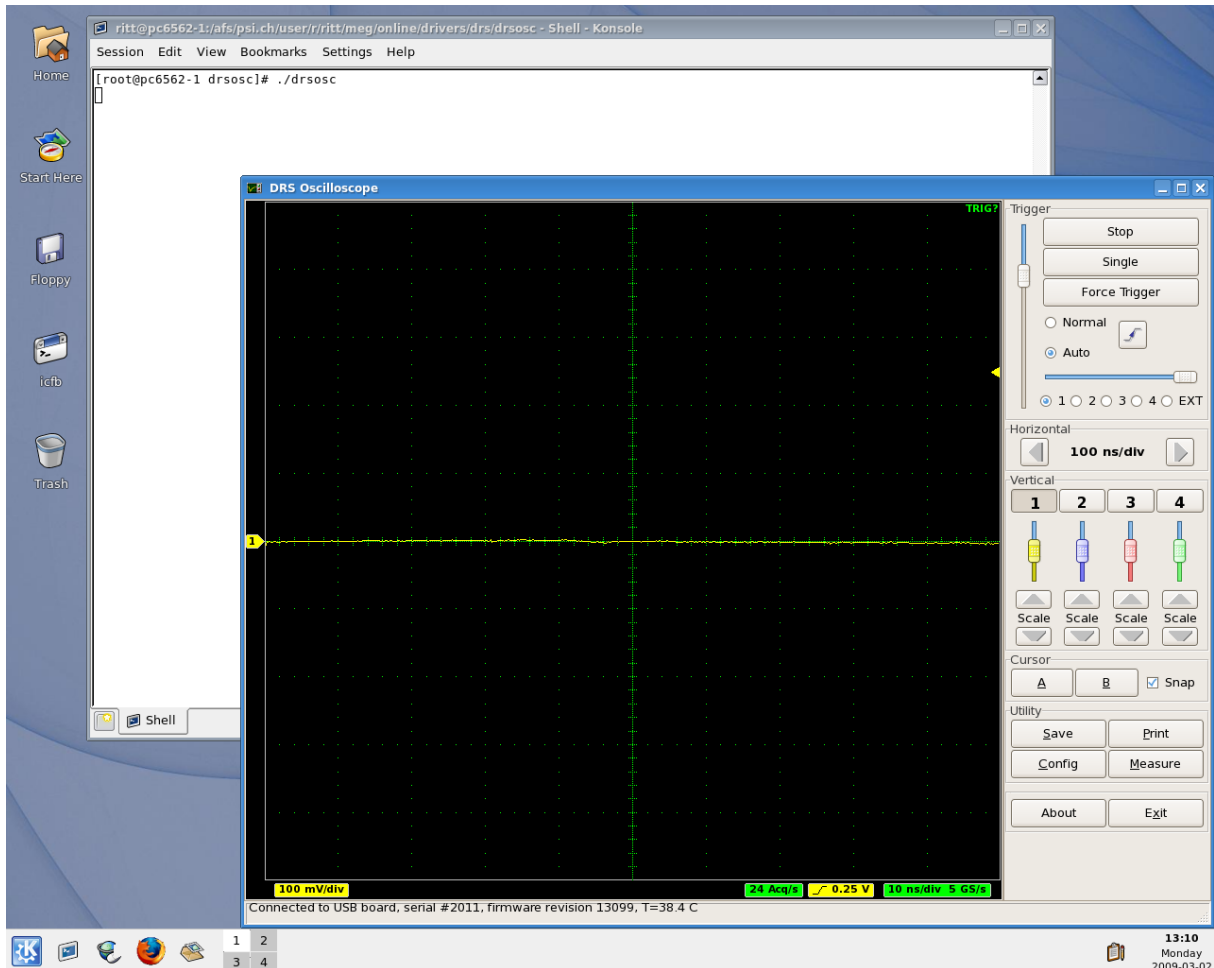
```
Configuration Descriptor:
```

```
  bLength                9
  bDescriptorType        2
  wTotalLength           46
  bNumInterfaces         1
  bConfigurationValue    1
  iConfiguration         0
  bmAttributes           0x80
  MaxPower               500mA
```

```
...
```

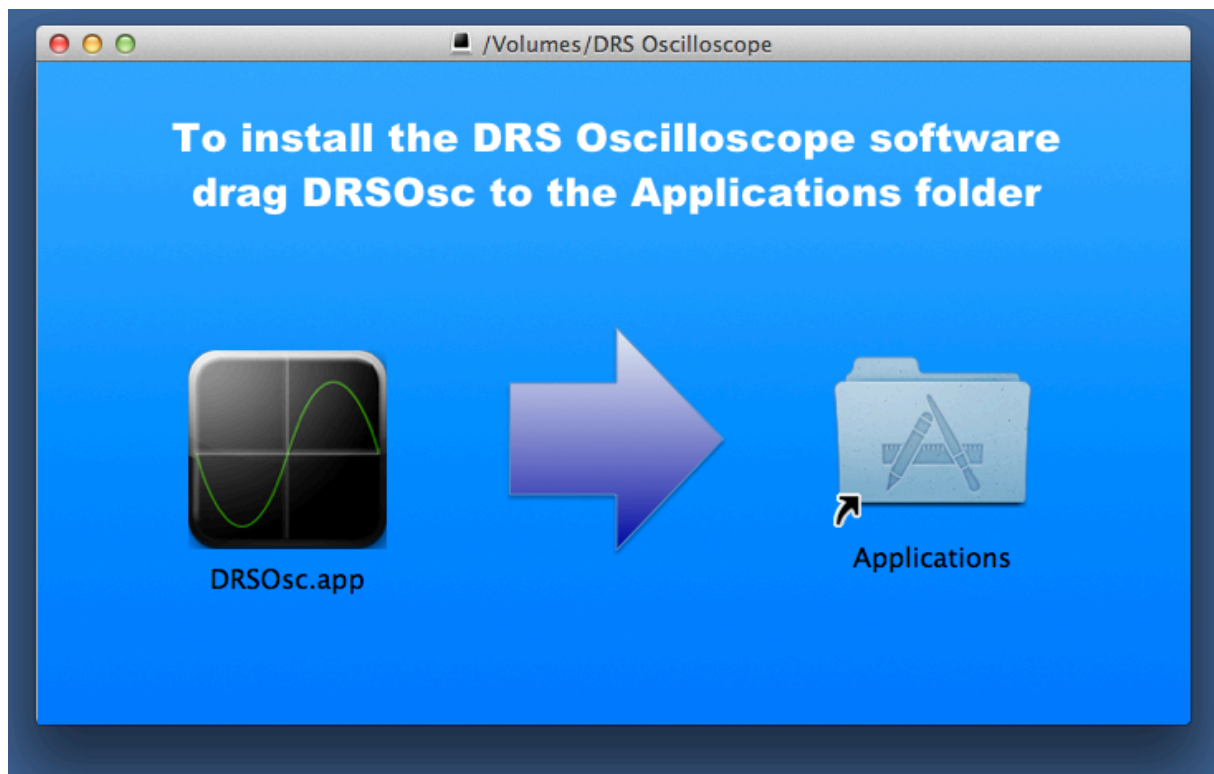
If the board is correctly recognized, one can access it with the command line program. Under most Linux distributions however, only the “root” user can directly access USB devices. Some systems can be configured to allow non-root access via the “udev” system, but the exact instructions vary from distribution to distribution and can therefore not be given here.

If the command line program works, the oscilloscope application “drsosc” can be started. It will open a X window and show exactly the same functionality as its Windows counterpart:



## 2.5. *Macintosh OSX*

The Linux tar ball is in principle compatible with OSX 10.6+, so a simple “make” will compile the applications. A more convenient way is however to install the pre-compiled binary DRSOsc program. Simply download **DRS Oscilloscope.dmg** from <http://www.psi.ch/drs/download>, click on it and drag the DRSOsc icon into the Application folder. The libusb library is already compiled into the executable so does not need to be installed separately, unless one wants to compile the programs from the tar ball.

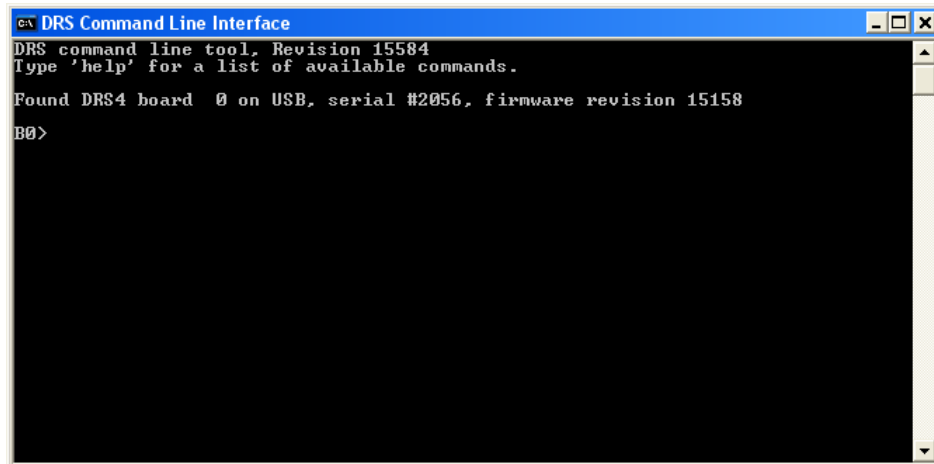




## 3. Running the Board

### 3.1. Command line Interface “drsc1”

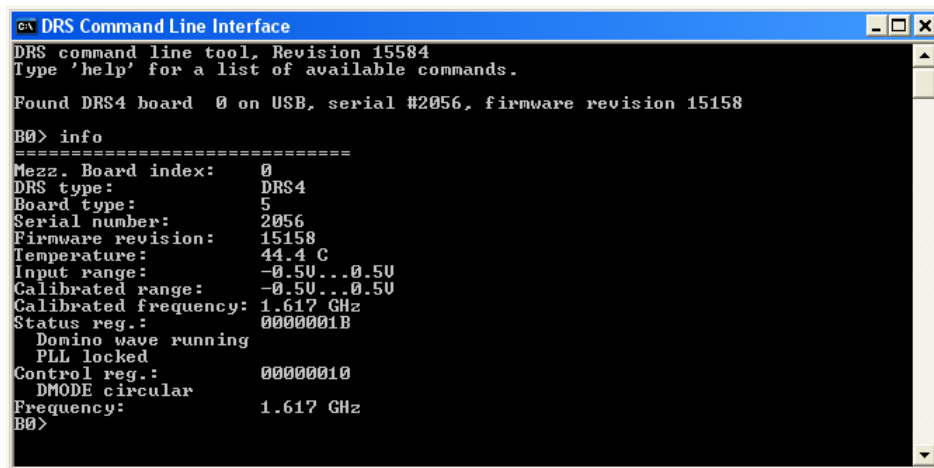
Clicking on „DRS Command Line Interface“ (Windows) or entering “drsc1” (Linux) will start a simple application which connects to the DRS4 Evaluation Board. If it finds the board, it displays the board serial number and the firmware revision as on the following screen shot:



```
DRS Command Line Interface
DRS command line tool, Revision 15584
Type 'help' for a list of available commands.

Found DRS4 board 0 on USB, serial #2056, firmware revision 15158
B0>
```

Now you are ready to issue your first command “info” which shows some more information, like the current board temperature. The temperature sensor is on the bottom side just below the DRS4 chip. If you keep issuing “info” commands and touch that sensor with your finger, you should see the temperature increase.

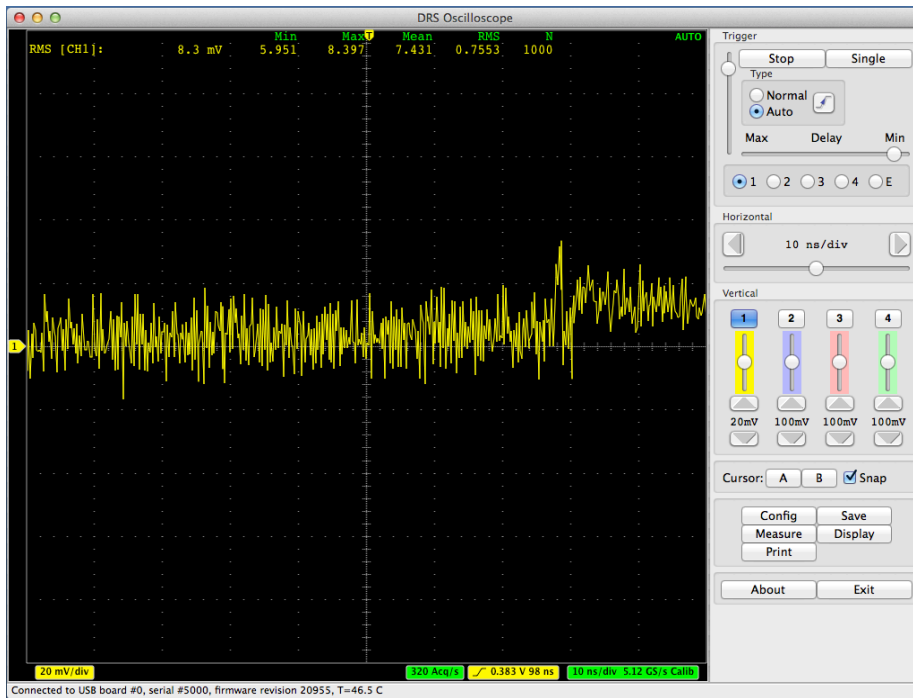


```
DRS Command Line Interface
DRS command line tool, Revision 15584
Type 'help' for a list of available commands.

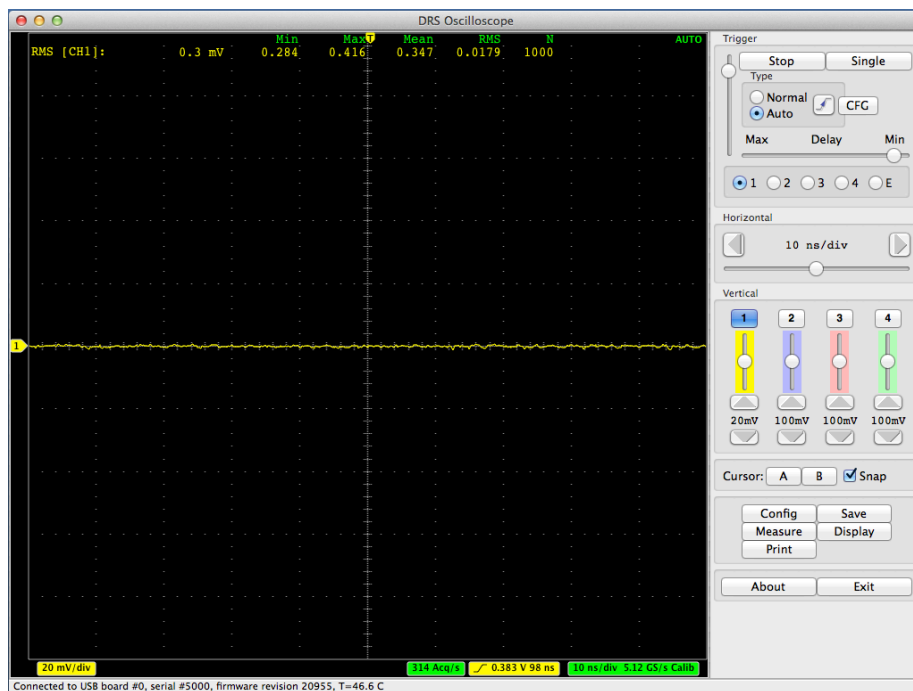
Found DRS4 board 0 on USB, serial #2056, firmware revision 15158
B0> info
=====
Mezz. Board index: 0
DRS type: DRS4
Board type: 5
Serial number: 2056
Firmware revision: 15158
Temperature: 44.4 C
Input range: -0.50...0.50
Calibrated range: -0.50...0.50
Calibrated frequency: 1.617 GHz
Status reg.: 0000001B
  Domino wave running
  PLL locked
Control reg.: 00000010
  DMODE circular
Frequency: 1.617 GHz
B0>
```

### 3.2. Oscilloscope application “DRSOsc”

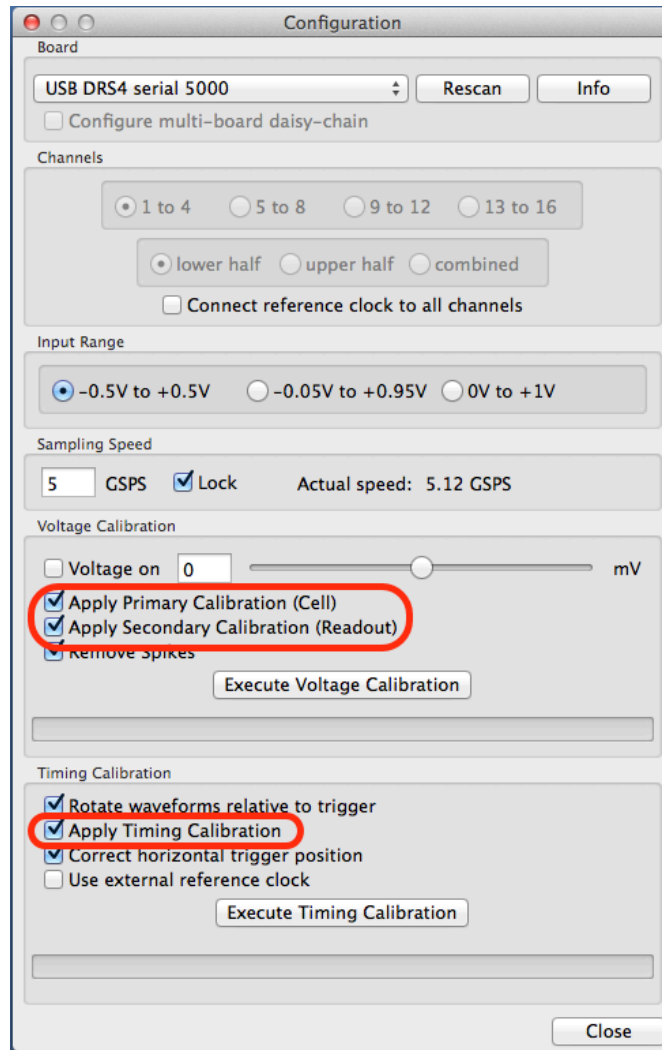
The second application is an oscilloscope-like program, which connects to the DRS4 board and works pretty much like a normal oscilloscope. You can select the trigger mode, trigger level and trigger source, which can also be a logical combination of channels. You enable a channel by clicking on the number “1” to “4”. There are two cursors and a few utilities.



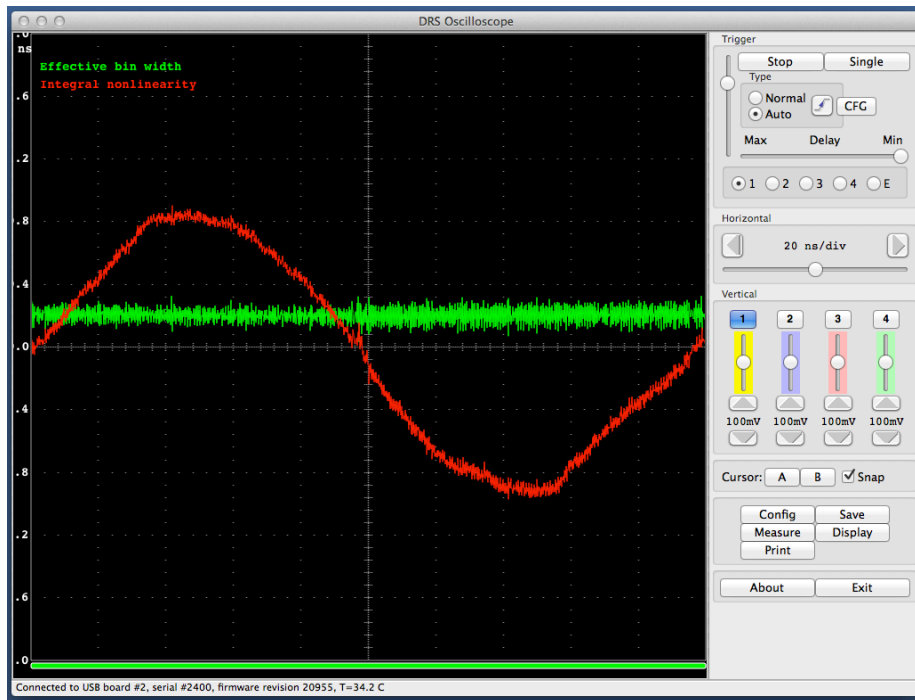
The picture above shows an un-calibrated evaluation board, which shows a noise level of about 8 mV RMS. After offset and gain calibrations, the noise level is reduced significantly to a level of about 0.35 mV:



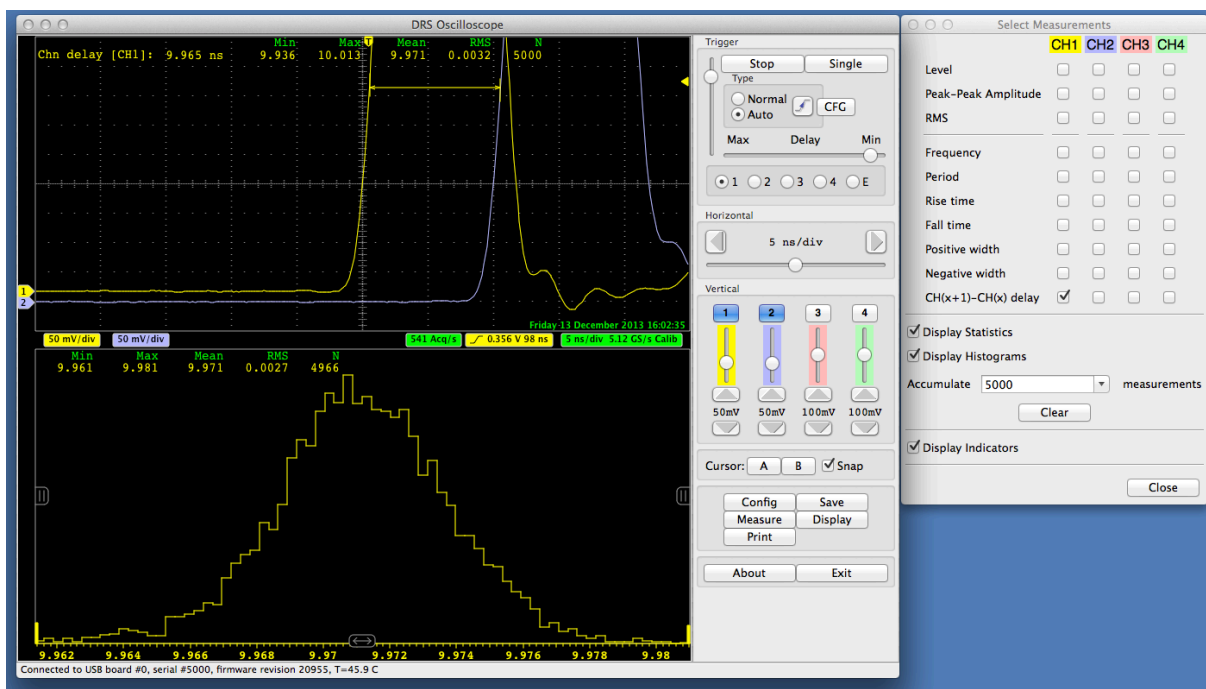
The DRS4 evaluation board is shipped pre-calibrated in amplitude and time. This calibration can be turned on or off using the check boxes “Display calibrated waveforms” and “Display timing calibrated waveforms” in the “Config” Dialog:



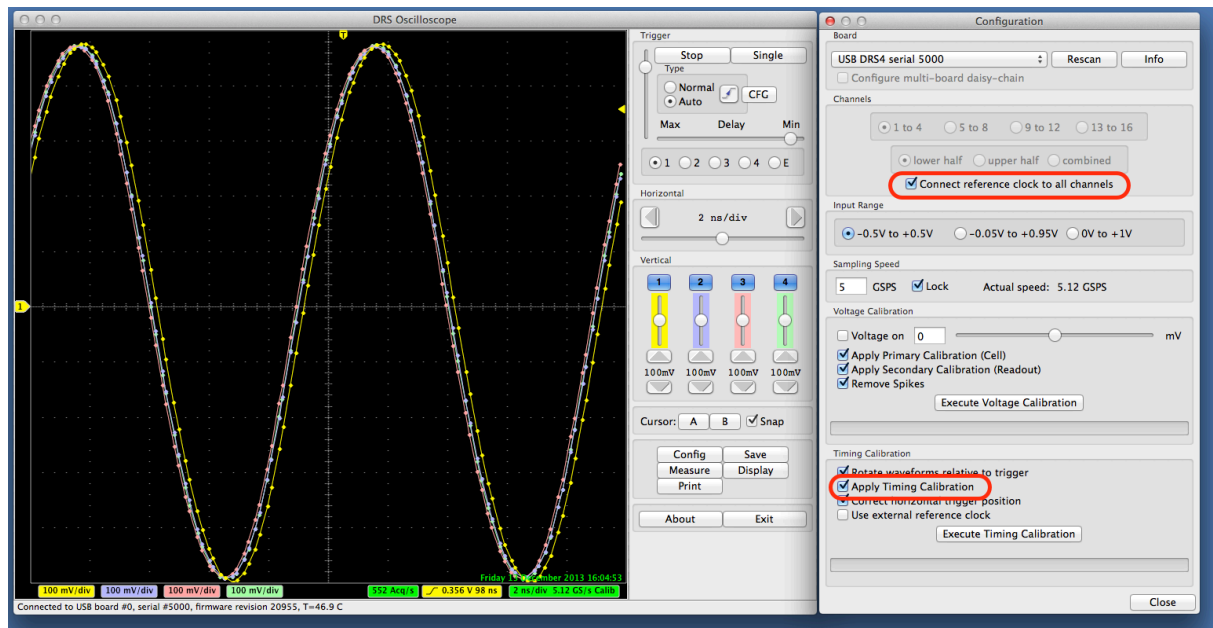
The calibration can be re-done any time by clicking on the “Execute Voltage Calibration” and “Execute Timing Calibration” buttons. For the voltage calibration, the inputs are switched to a calibration voltage generated by a DAC. Three calibration points (-0.4V, 0V, +0.4V) are measured and an offset and gain is evaluated. For the timing calibration, an internal 100 MHz clock is sampled in all channels and analyzed to determine the effective width of each cell. Following picture shows the result of such a timing calibration done at 5 GSPS. The effective bin width deviates from the nominal value of 0.2 ns by up to  $\pm 100$  ps, and the integral timing nonlinearity adds up to almost 0.4 ns, which is typical for the DRS4 chip. Since transistor parameters have normally gradients over the chip wafer, SCA chips are usually “faster” on one side than on the other.



This calibration data both for voltage and timing is then stored in the EEPROM on the evaluation board, from where it is obtained each time the oscilloscope gets started. This assures that a board is calibrated even when used on different computers. Note however that the timing calibration is only valid for one individual sampling speed. So if you want to run the board at a different speed, you have to redo the timing calibration at that speed. The voltage calibration is a bit less dependent on the sampling speed, there is however some dependence on temperature. It is advised to keep the board running for a few minutes until the temperature shown in the status bar stabilizes before doing a voltage calibration. If you want to achieve the ultimate timing resolution, a voltage calibration has to be done before each timing calibration. The evaluation board is then capable of measuring time differences down to a few pico seconds:



For test purposes, an internal 100 MHz reference clock signal can be connected to all channels via the “Config” menu:



The effect of the timing calibration can be tested by turning the timing calibration on and off via the “Apply Timing Calibration” check box.

Waveforms can be saved in ASCII and binary formats by pressing the “Save” button. After opening a file, each trigger will write the waveform of the active channel(s) to that file. Note that when running for some time, the file will grow very quickly. If the file has the extension “.xml” it will be written in ASCII form using XML encoding, otherwise a raw binary file will be written. Here is a snippet of such an XML file:

```
<?xml version="1.0" encoding="ISO-8859-1"?>
<!-- created by MXML on Fri Dec 13 16:11:35 2013 -->
<DRSOSC>
  <Event>
    <Serial>1</Serial>
    <Time>2013/12/13 16:11:35.341</Time>
    <HUnit>ns</HUnit>
    <VUnit>mV</VUnit>
    <Board_2345>
      <Trigger_Cell>121</Trigger_Cell>
      <Scaler1>1234</Scaler1>
      <CHN1>
        <Data>-1.546,-472.3</Data>
        <Data>-1.320,-428.3</Data>
        ...
        <Data>198.020,-499.9</Data>
        <Data>198.267,-475.3</Data>
      </Data>
      <Scaler2>1234</Scaler2>
      <CHN2>
        <Data>-1.568,-439.0</Data>
        <Data>-1.335,-388.7</Data>
        ...
        <Data>198.000,-481.6</Data>
        <Data>198.261,-448.3</Data>
      </CHN2>
    </Event>
  </Board_2345>
</DRSOSC>
```

```

</Board_2345>
</Event>
<Event>
  <Serial>2</Serial>
  <Time>2013/12/13 16:11:35.343</Time>
  <HUnit>ns</HUnit>
  <VUnit>mV</VUnit>
  <Board_2345>
    <Trigger_Cell>101</Trigger_Cell>
    <Scaler1>4321</Scaler1>
    <CHN1>
      <Data>-1.653,-516.0</Data>
      <Data>-1.437,-462.9</Data>
      ...

```

Each individual event contains a header with the serial number of that event (starting with 1), and the date/time it has been recorded. This is followed by the evaluation board serial number. In case of a multi-board configuration (starting with software version 4.1) there might be more than one board recorded, which can be distinguished by their board serial numbers. After the board serial number there is an entry of the Trigger Cell. This is the DRS4 memory cell which received the trigger, which can normally be ignored.

Then there is the channel data with pairs of time (in ns) and voltage (in mV), where time zero is at the trigger point. The number of channels depend on which channel was on when the data was recorded. It might be a single channel (CHN1) or all four channels (CHN1-CHN4). Please note that the XML format requires more hard disk space compared to the binary format and takes also more CPU power to be written, so the maximum data rate is limited.

The binary format requires less space and can be written faster, but it requires a special program to read and analyze the data afterwards.

Depending on the number of channels that are “on” during data acquisition, the file contains up to four channels for each evaluation board, which can be identified by their channel headers. In a multi-board setup (starting with software version 4.1) there can be more than one board per event. In this case there are several board blocks with different board serial numbers.

At the beginning of each file there is a section that contains the timing calibration of one or more boards. In the DRS4 chip, the “width” of each sampling bin is different, and therefore needs to be measured and calibrated. This timing calibration is stored inside the EEPROM of each evaluation board. The timing section at the beginning of the binary file contains a copy of this timing calibration. Since it is constant over time, it is valid for all events in the file and is not repeated for each event in order to save space. Starting with the V5 board, each channel has its own calibration. Depending which channels were turned on during acquisition, there might be 1-4 timing calibration arrays, which can be seen from the channel headers.

One problem however is that in each event the readout starts at a different position of the DRS4 chip (the so-called “trigger cell”). Unlike in the XML format, the voltage/time pairs have to be calculated for each event individually. If the array  $dt_{ch}[1024]$  contains the effective bin widths of a channel  $ch$  of the DRS4 chip obtained from the binary file, the time  $t_{ch}[i]$  belonging to sample  $i$  can be calculated using the trigger cell  $t_{cell}$  as follows:

$$t_{ch}[i] = \sum_{j=0}^{i-1} dt_{ch}[(j + t_{cell})\%1024]$$

where % is the modulo operator. The time array starts with  $t_{ch}[0]=0$ .

Another complication comes from the fact that the timing of the channels in a DRS chip is different. So a given cell  $i$  has a different absolute time in each channel. The only common point in time is cell #0 (the first cell in the capacitor array), which has the same absolute time in all DRS channels. To obtain best timing, it is therefore necessary to align all channels such that their cell #0 has the same time  $t_{ch,0}$  as given by

$$t_{ch,0} = t_{ch}[(1024 - t_{cell})\%1024]$$

If channel 1 is used as the reference point, the time arrays of the other channels can be shifted so that their cell #0 aligns:

$$t_{ch}[i]^{corrected} = t_{ch}[i] - (t_{ch,0} - t_{0,0})$$

The distribution contains a file read\_binary.cpp, which reads the binary data format produced by DRSOsc and calculates the correct times as described above. It can be used as an example program to analyze binary waveform data.

The timing calibration section is followed by the actual waveform data. Each event can be identified by the event header 'EHDR', which is followed by one or more arrays of sampling values, depending on what channel was enabled during the acquisition. The voltage values are encoded as 2-byte integers, where 0 corresponds to -0.5V and 65535 corresponds to +0.5V.

All multi-byte data is encoded with LSB first, as in all Intel PC systems.

Word	Byte 0	Byte 1	Byte 2	Byte 3	Contents
0	'D'	'R'	'S'	'2'	File header, Byte 3 = version
1	'T'	'I'	'M'	'E'	Time Header
2	'B'	'#'	Board number		Board serial number
3	'C'	'0'	'0'	'1'	Channel 1 header
4	Time Bin Width #0				Effective time bin width in ns for channel 1 encoded in 4-Byte floating point format
5	Time Bin Width #1				
...	...				
1027	Time Bin Width #1023				
1028	'C'	'0'	'0'	'2'	Channel 2 header
1029	Time Bin Width #0				Effective time bin width in ns for channel 2 encoded in 4-Byte floating point format
1030	Time Bin Width #1				
...	...				
2052	Time Bin Width #1023				
2053	'E'	'H'	'D'	'R'	Event Header
2054	Event Serial Number				Serial number starting with 1
2055	Year		Month		Event date/time 16-bit values
2056	Day		Hour		
2057	Minute		Second		

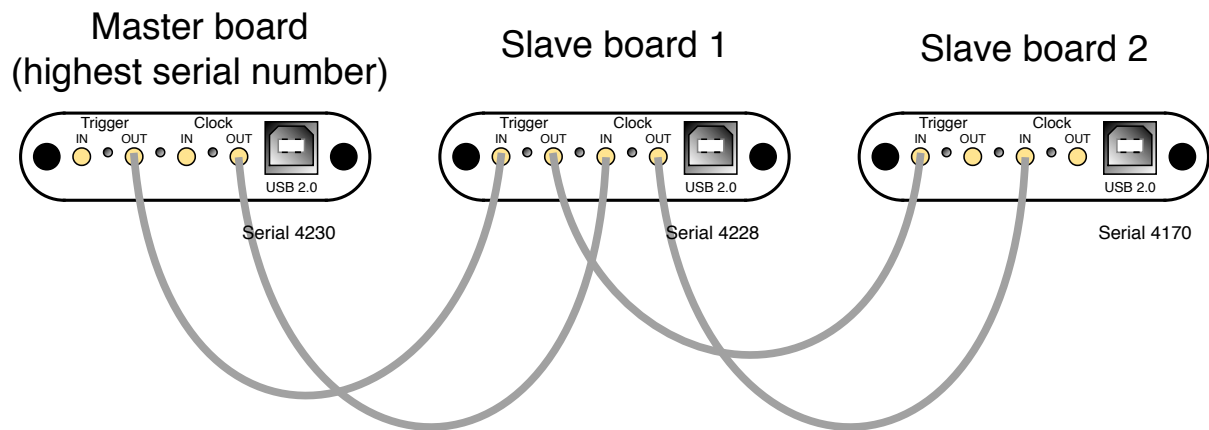
2058	Millisecond		Range		Range center (RC) in mV
2059	\B'	\#'	Board number		Board serial number
2060	\T'	\#'	Trigger cell		Number of first readout cell
2061	\C'	\0'	\0'	\1'	Channel 1 header
2062	Scaler #1				Scaler for channel 1 in Hz
2063	Voltage Bin #0		Voltage Bin #1		Channel 1 waveform data encoded in 2-Byte integers. 0=RC-0.5V and 65535=RC+0.5V. RC see header.
2064	Voltage Bin #2		Voltage Bin #3		
...	...		...		
2574	Voltage Bin #1022		Voltage Bin #1023		
2575	\C'	\0'	\0'	\2'	Channel 2 header
2576	Scaler #2				Scaler for channel 2 in Hz
2577	Voltage Bin #0		Voltage Bin #1		Channel 2 waveform data encoded in 2-Byte integers. 0=RC-0.5V and 65535=RC+0.5V. RC see header.
2578	Voltage Bin #2		Voltage Bin #3		
...	...		...		
3088	Voltage Bin #1022		Voltage Bin #1023		
3089	\E'	\H'	\D'	\R'	Next Event Header
...					

Example of a binary file with two out of four channels being switched on.

### 3.3. Multi-board configuration

Starting with software version 4.1, multi-board setups are possible. Several evaluation boards might be connected simultaneously to a computer. On each event, all boards are read out together, which allows the setup of a small DAQ system with more than four input channels. The boards can be connected to individual PC USB ports, or an external USB hub can be used. Please make sure that the USB hub is externally powered, since each board draws 2.5 Watts, which cannot be satisfied by passive USB hubs. In multi-board configurations, the evaluation board with the highest serial number becomes the master board, and all other boards are treated as slave boards with descending serial numbers. Both the trigger and the clock (reference clock for the DRS4 chip) is passed in a daisy-chain mode from the master board via the Trigger OUT and Clock OUT connectors to the Trigger IN and Clock IN connectors of the first slave board and so on as depicted in the following figure:



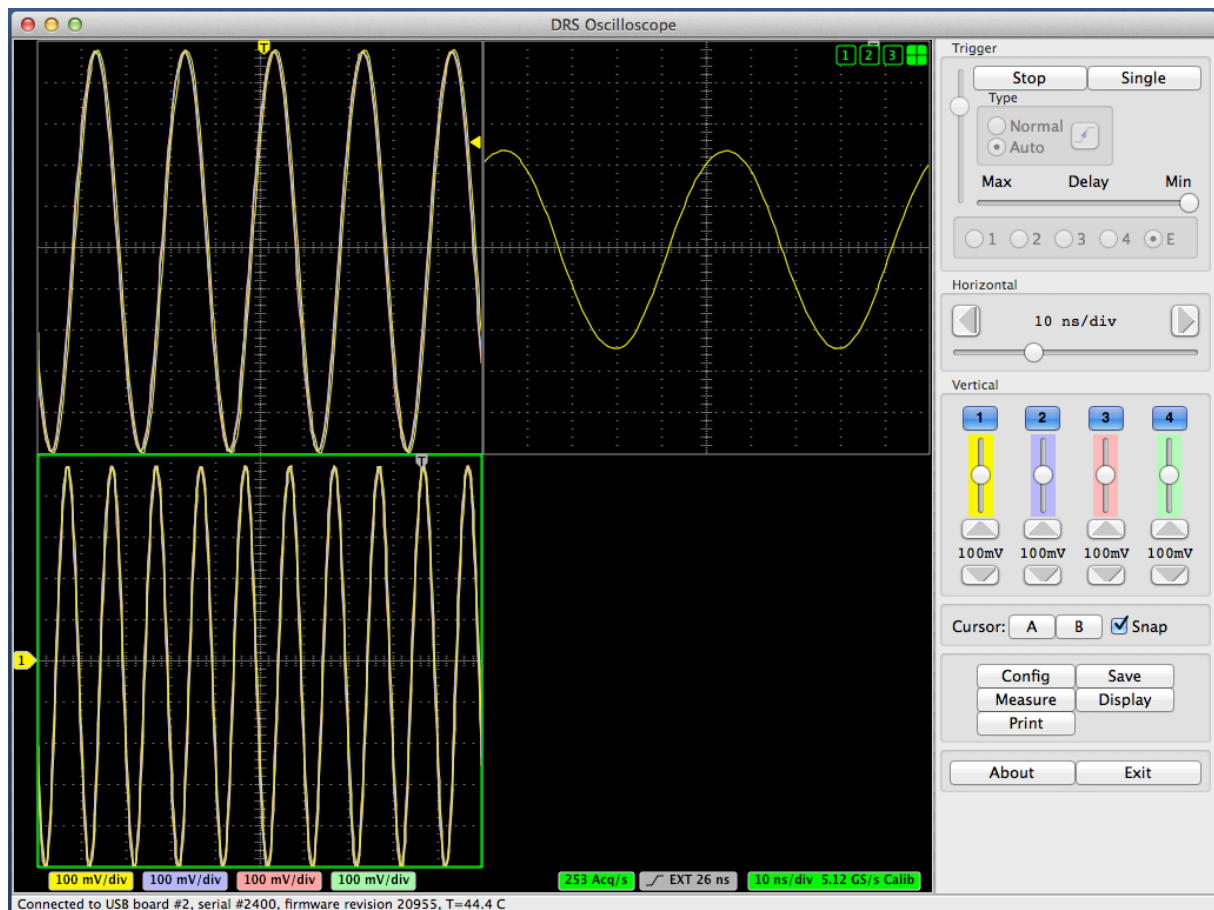


In this way, up to 16 boards can be connected. The trigger of the master board can be configured in the usual way, so it can trigger on an individual channel, a logic combination of its four channels, or it can trigger on the external input via Trigger IN. The slave boards receive then the trigger from the master board. A trigger logic incorporating the inputs of the slave boards however is not possible.

When using multi-board configurations, the maximum event rate is slower than for a single board, because all boards can only be read out one after the other. So the event rate drops to about 500 Hz / number of boards. In order to distinguish data from different boards, the board serial number is written into each event when writing to a XML or binary file (see previous section).

The timing between boards is poorer than between channels of the same board, which comes from the fact that the clock distribution causes some jitter when going through two FPGAs. A typical time resolution between two boards is 60 ps at 5 GSPS when using the clock distribution, and 400 ps when no clock distribution is used. The additional trigger delay between two boards is about 16 ns, then means slave board 1 triggers 16 ns after the master board, slave board 2 32 ns after the master board and so on. When building dedicated DRS4 boards, jitter-cleaner chips and differential clock distribution schemes can be used to keep the time resolution between boards also below 10 ps.

To configure a multi-board system, first connect the boards in the daisy-chain mode as shown above using MCX cables, and connect the USB cables. Then select “Configure multi-board daisy-chain” in the “Config” page of the DRSOsc program. The boards will then be configured correctly (like the trigger and reference clock of all slave boards will be set to “external”) and read out in sequence. When clicking on the “split-mode display” filed (cross hair button on the top right corner of the oscilloscope), the waveforms of all connected boards will be shown simultaneously:



## 4. Development Hints

The idea behind the evaluation board is to make first steps in using the DRS4 chip, but then develop your own custom electronics around the chip. The first thing to do there is to study carefully the DRS4 data sheet, which can be obtained from <http://drs.web.psi.ch/datasheets>. Then have a look at the DRS4 Evaluation Board Reference Design, which schematics is supplied at the end of this document. When you start to design your own electronics, there are however some important points, which are not necessarily obvious from the data sheet or from the reference design. These points together with some design tips are explained in this section.

### 4.1. Power Supply

As with any analog design, the quality of the power supply is very important, since it has an influence of the noise level measured by the DRS4 chip. Low noise linear regulators together with the usual decoupling capacitors are recommended for all power supplies. The analog power supply  $AV_{DD}$  powers only the domino circuit of the DRS4 chip and directly influences the jitter of the sampling frequency. Long term variations in this power supply (seconds...) are regulated by the on-chip PLL, but high frequency noise in the MHz region leads directly to an increase of the PLL jitter. Therefore the evaluation board contains two separate 2.5V linear regulators for the DRS4 chip, one for the  $AV_{DD}$  power and one for the  $DV_{DD}$  power. Although the  $DV_{DD}$  power is called “digital power”, it powers also the analog output buffers of the DRS4 chip and needs the same good quality than the  $AV_{DD}$  power in order to minimize the noise of the board.

The DRS4 chip also contains two grounds AGND and DGND. They can be either routed separately on the board and be connected at the power source, or they can be directly connected to an overall dedicated ground plane of the PCB. Tests have been shown that the latter choice gives slightly less noise.

The bottom of the QFN76 package of the DRS4 has an exposed paddle connected to the internal DGND. It is recommended that this paddle is matched by a PCB pad of similar size connected to analog ground to achieve the best electrical and thermal performance of the DRS4. The copper plane should have several vias to achieve a good heat dissipation to flow through the PCB as shown in Figure 4:

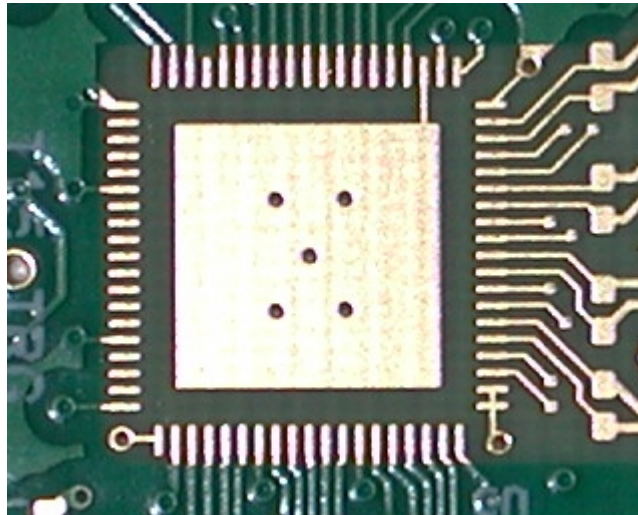


Figure 4: PCB pad under the DRS4 chip

These vias should be solder-filled or plugged. The maximum power dissipation of the DRS4 chip is not critical (350 mW), but an improved thermal stability helps the performance of any analog chip. To maximize the coverage and adhesion between the DRS4 and the PCB, the copper plane could be partitioned into several uniform sections, providing several tie points during the reflow process.

## **4.2. Analog Input**

If non-differential signals should be digitized with the DRS4 chip, they must be converted into differential signals for the DRS4 inputs. The simplest solution is to connect the IN- inputs to AGND and to connect the signals directly to the IN+ inputs. This method has however the disadvantage that the crosstalk and noise immunity of the DRS4 chip are worsened. The evaluation board V3 uses differential drivers THS4508 from Texas Instruments® for this purpose. These drivers were carefully selected since they have to drive the relatively high DRS4 input current of almost 1 mA and capacitive load without compromising the analog bandwidth. The current design gives about 700 MHz (-3 dB) with moderate power consumption, so that the evaluation board can still be powered from the USB power (500 mA @ 5V). The linear regulator of the evaluation board V2 could however not be used, since the efficiency would be too low. Instead, a switching regulator LMZ10503 from National Semiconductor® is used on the board. It has an efficiency of more than 95% and a low output ripple. The output voltage of 3.3V is then converted using traditional linear regulators into two 2.5V low noise power supplies, which power the analog part of the board.

Other designs are possible which push the analog bandwidth to 800 or 900 MHz, close to the theoretical limit of 950 MHz of the DRS4 chip, but they require more power.

The usual design rules like proper termination, matched impedance PCB traces and separate power supply PCB planes apply as in any high frequency analog design.

### **4.3. Control Voltages**

The DRS4 chip requires certain control voltages: ROFS, O-OFS and BIAS. The latter two are generated internally with some default voltage, but can be “overwritten” by an external low impedance source. It is recommended to connect these lines to an external 16-bit DAC, so that the DRS4 input range can be fine-tuned on a board-by-board basis, to compensate for chip variations. The ROFS signal should be driven by a high speed low noise buffer. If this signal would be directly connected to the DAC output, the signal height would change slightly during the chip readout and the measurement would show a varying baseline level.

### **4.4. ADC Clock**

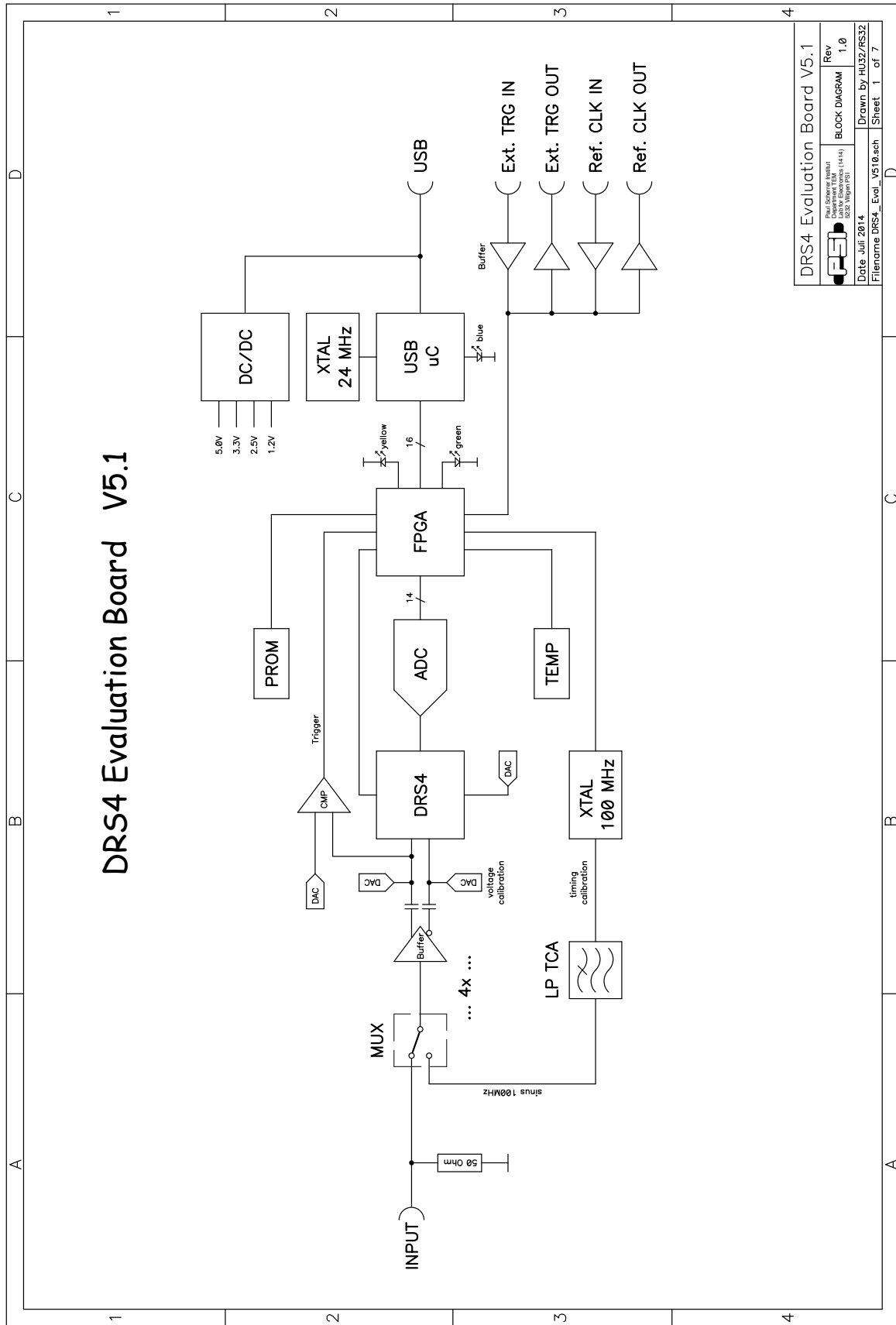
There is a very strict relation between the DRS4 output shift register clock SRCLK and the ADC clock (see DRS4 data sheet WAVEFORM READOUT). In order to reduce the noise due to aperture jitter, the phase shift between these two clocks must be fixed and contain very small jitter (~10ps). The easiest way to generate this phase shift is to use the digital clock managers (DCM) in the FPGA, as it is done on the evaluation board. Since the DCMs have however an inherent phase jitter of up to 150ps, this introduces some noise in form of a baseline variation when sampling a DC signal in the order of up to a few mV. If this becomes a problem, it is recommended to generate the phase shift between these two clocks with a low jitter delay circuit.

### **4.5. Calibration**

In order to perform a proper voltage calibration of the DRS4 chip, a well-defined DC voltage needs to be connected to all DRS4 inputs and measured. The evaluation board uses the on-board 16-bit DAC connected to all inputs for that purpose. Since the DRS4 chip draws quite some current on its inputs, the DAC is buffered via a low noise OpAmp AD8605.

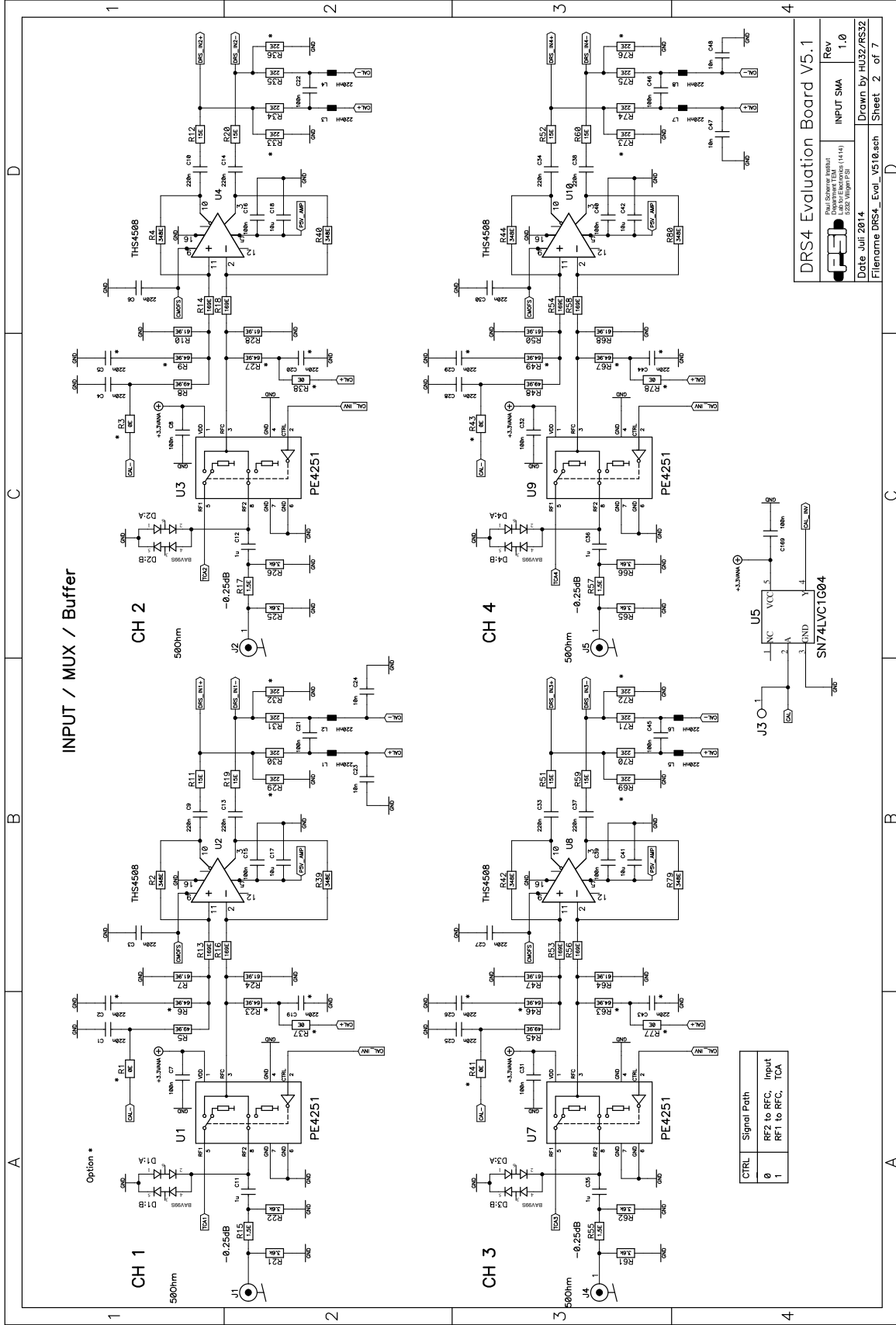
For the timing calibration, a low jitter 100 MHz sine wave needs to be connected to all channels. In evaluation boards previous to version 5, only one DRS4 channel was connected to the clock, which allows timing calibrations good for about 10-15 ps. To achieve the ultimate resolution below 3 ps, the clock needs to be connected to all DRS4 channels via analog switches. The sine wave is obtained from a low jitter quartz oscillator with a passive 3<sup>rd</sup> order low pass filter. Since the oscillator would cause some noise during normal operation, it can be disabled through the FPGA.

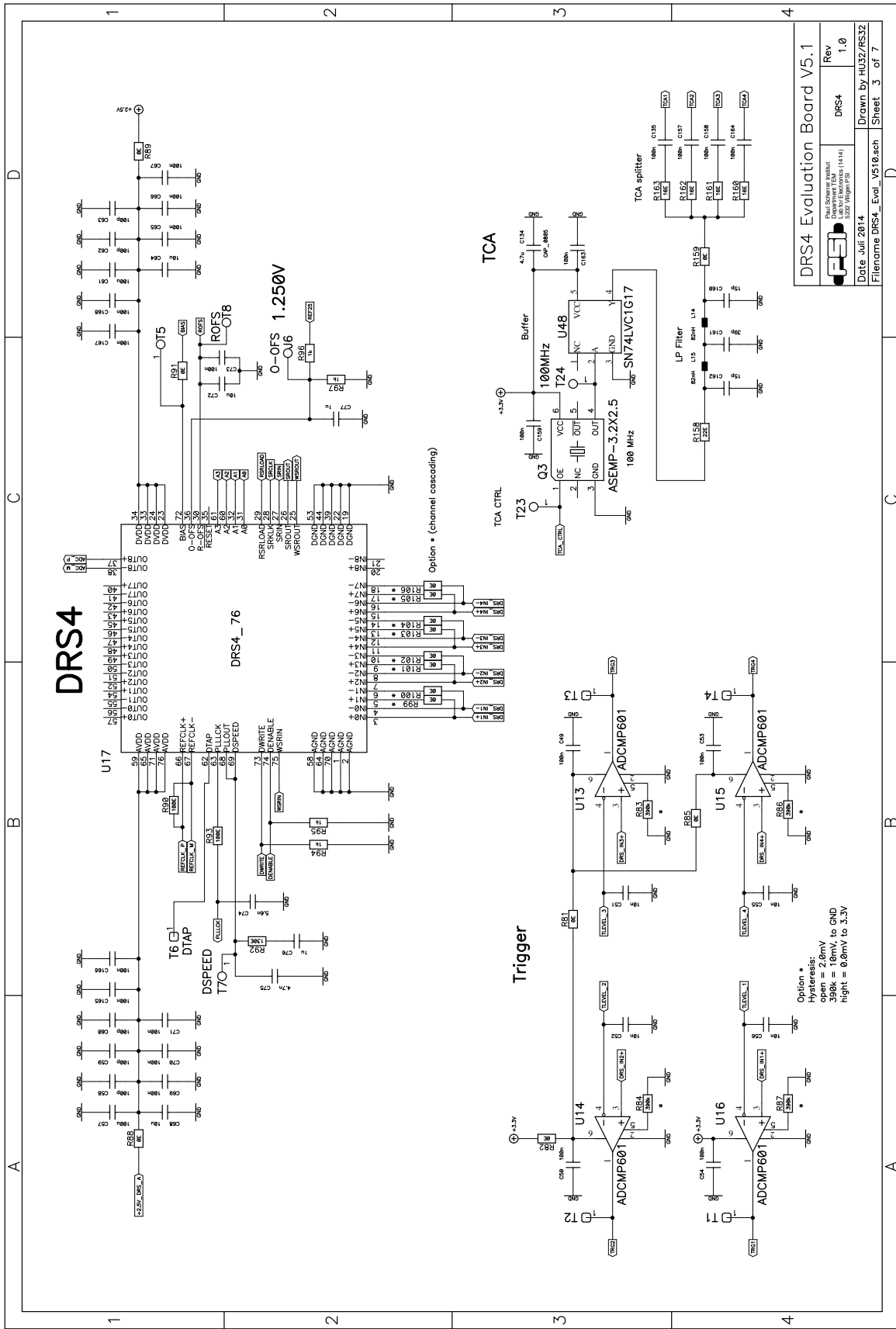
# 5. DRS4 Evaluation Board V5.1 Schema




DRS4 Evaluation Board V5.1	
Rev	1.0
BLOCK DIAGRAM	
Date	July 2014
Drawn by	HU32/RS32
Filename	DRS4_Eval_v510.sch
Sheet	1 of 7

# INPUT / MUX / Buffer

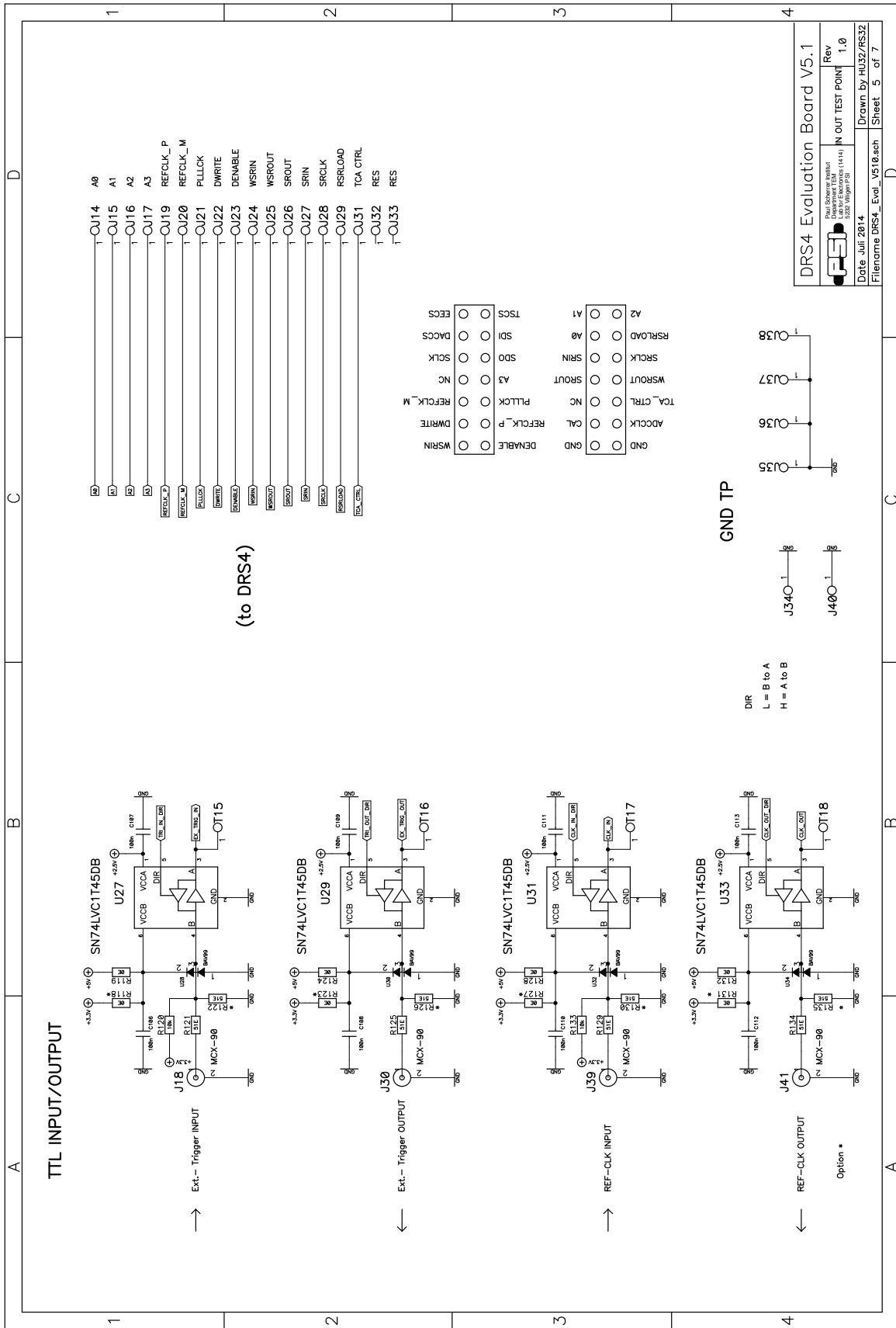




DRS4 Evaluation Board V5.1	
	Rev 1.0
Date: July 2014 Filename: DRS4_Eval_V510.sch	Drawn by: HU32/RS32 Sheet: 3 of 7







TTL INPUT/OUTPUT

(to DRS4)

GND TP

DIR  
L = B to A  
H = A to B

- |          |                          |        |                          |
|----------|--------------------------|--------|--------------------------|
| DENABLE  | <input type="checkbox"/> | DWRITE | <input type="checkbox"/> |
| ADCLK    | <input type="checkbox"/> | PCLK   | <input type="checkbox"/> |
| TCA_CTRL | <input type="checkbox"/> | NC     | <input type="checkbox"/> |
| WSROUT   | <input type="checkbox"/> | SRCLK  | <input type="checkbox"/> |
| SRCLK    | <input type="checkbox"/> | SRIN   | <input type="checkbox"/> |
| RSRLOAD  | <input type="checkbox"/> | SDO    | <input type="checkbox"/> |
| SRLOAD   | <input type="checkbox"/> | SDI    | <input type="checkbox"/> |
| RES      | <input type="checkbox"/> | TSCS   | <input type="checkbox"/> |
| TCA_CTRL | <input type="checkbox"/> | ECS    | <input type="checkbox"/> |
| RES      | <input type="checkbox"/> |        |                          |

- |          |                          |     |                          |
|----------|--------------------------|-----|--------------------------|
| RES      | <input type="checkbox"/> | RES | <input type="checkbox"/> |
| TCA_CTRL | <input type="checkbox"/> | RES | <input type="checkbox"/> |
| RSRLOAD  | <input type="checkbox"/> | RES | <input type="checkbox"/> |
| SRLOAD   | <input type="checkbox"/> | RES | <input type="checkbox"/> |
| WSROUT   | <input type="checkbox"/> | RES | <input type="checkbox"/> |
| SRCLK    | <input type="checkbox"/> | RES | <input type="checkbox"/> |
| SRIN     | <input type="checkbox"/> | RES | <input type="checkbox"/> |
| SDO      | <input type="checkbox"/> | RES | <input type="checkbox"/> |
| SDI      | <input type="checkbox"/> | RES | <input type="checkbox"/> |
| TSCS     | <input type="checkbox"/> | RES | <input type="checkbox"/> |
| ECS      | <input type="checkbox"/> | RES | <input type="checkbox"/> |
| DENABLE  | <input type="checkbox"/> | RES | <input type="checkbox"/> |
| DWRITE   | <input type="checkbox"/> | RES | <input type="checkbox"/> |
| PCLK     | <input type="checkbox"/> | RES | <input type="checkbox"/> |
| ADCLK    | <input type="checkbox"/> | RES | <input type="checkbox"/> |
| TCA_CTRL | <input type="checkbox"/> | RES | <input type="checkbox"/> |
| WSROUT   | <input type="checkbox"/> | RES | <input type="checkbox"/> |
| SRCLK    | <input type="checkbox"/> | RES | <input type="checkbox"/> |
| SRIN     | <input type="checkbox"/> | RES | <input type="checkbox"/> |
| SDO      | <input type="checkbox"/> | RES | <input type="checkbox"/> |
| SDI      | <input type="checkbox"/> | RES | <input type="checkbox"/> |
| TSCS     | <input type="checkbox"/> | RES | <input type="checkbox"/> |
| ECS      | <input type="checkbox"/> | RES | <input type="checkbox"/> |

DRS4 Evaluation Board V5.1

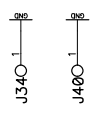
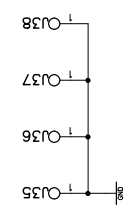
File: DRS4\_Eval\_V510.sch | Sheet 5 of 7

Date: Jul 2014

Rev: 1.0

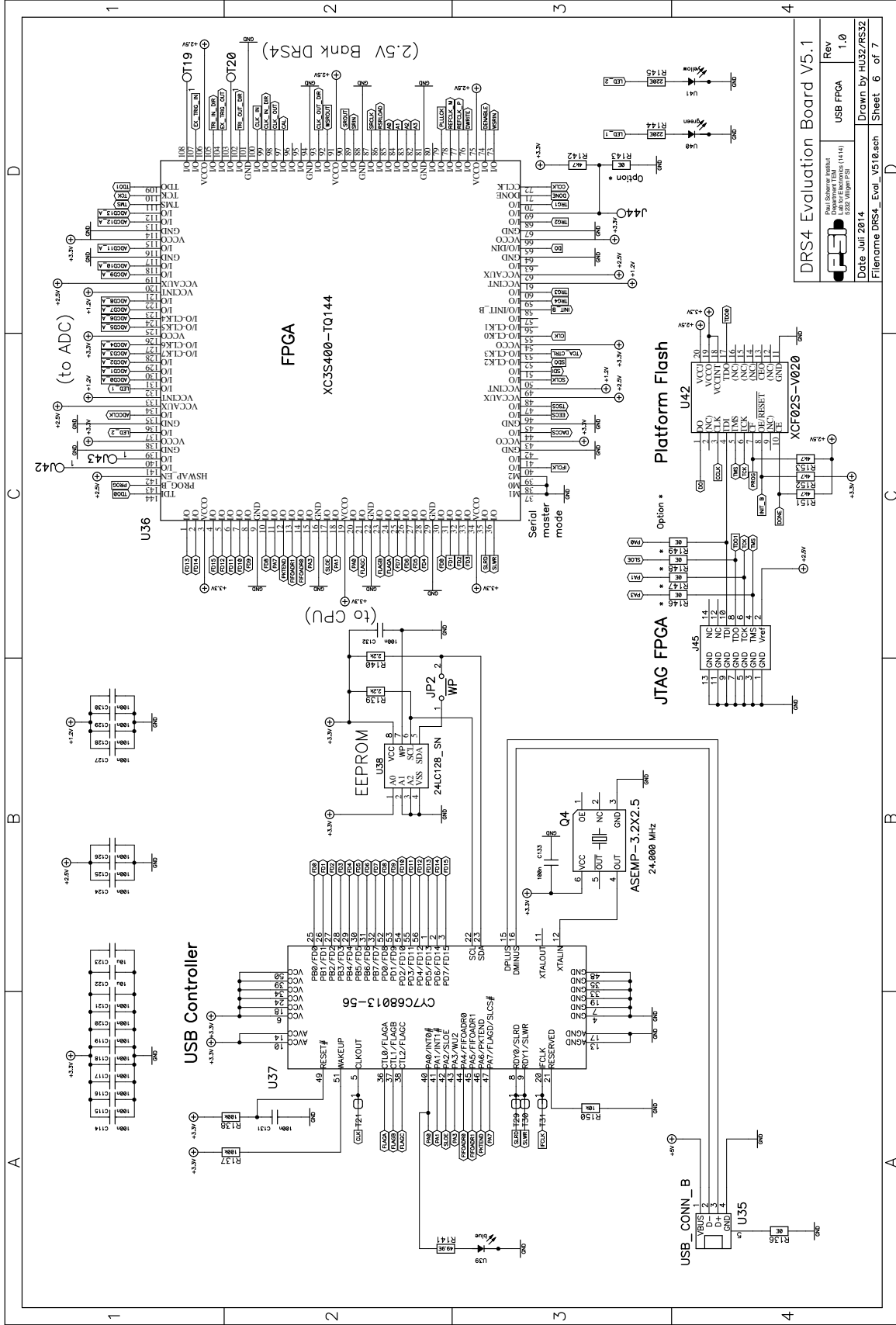
IN OUT TEST POINT

Drawn by: HUJ22/RS32

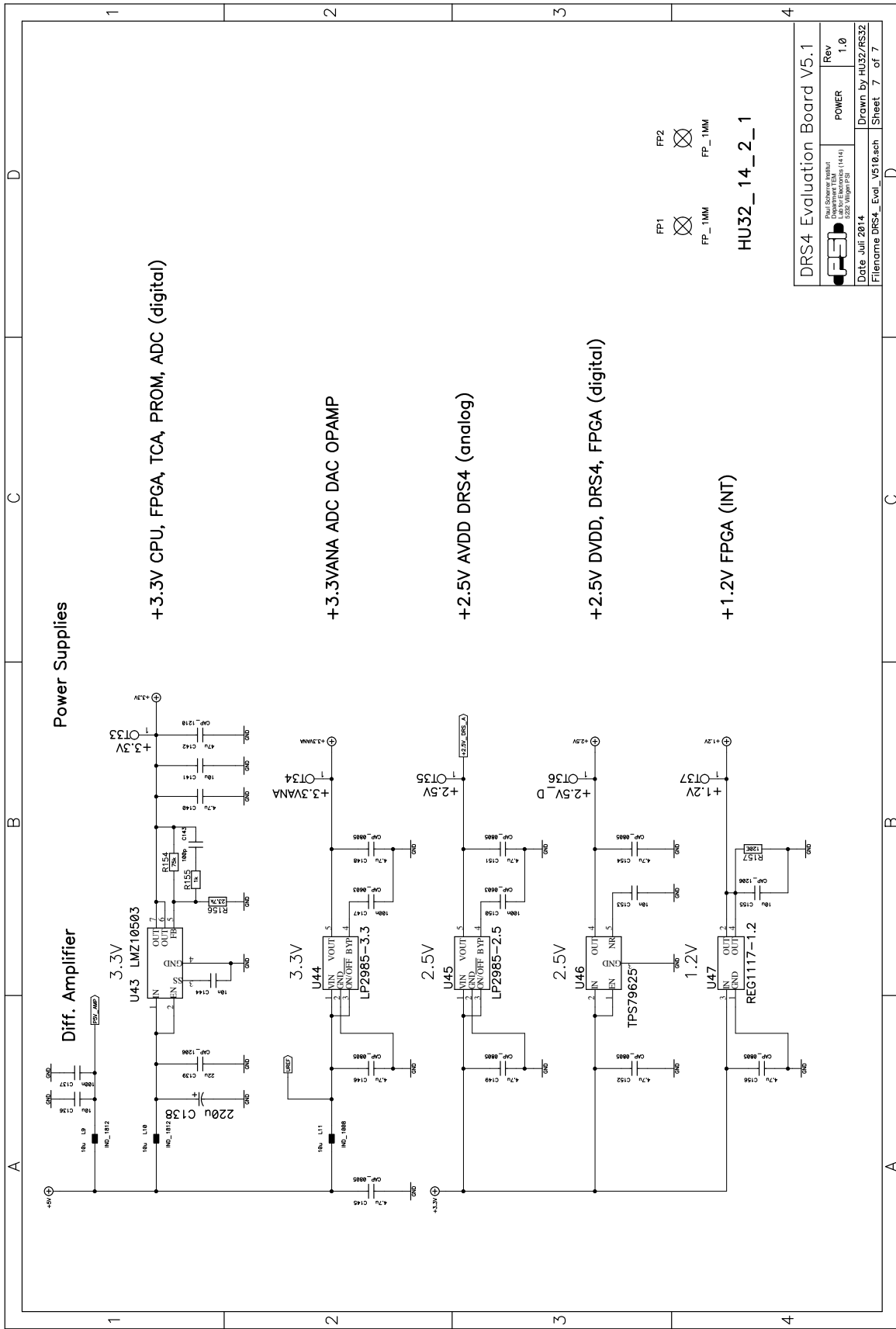



DIR  
L = B to A  
H = A to B

Option \*



DRS4 Evaluation Board V5.1  
 Rev 1.0  
 USB FPGA  
 Date July 2014  
 Drawn by HU32/RS32  
 Filename DRS4\_Eval\_V510.sch | Sheet 6 of 7



DRS4 Evaluation Board V5.1	
 FES Dept. Science & Health Department TSM 3.322, Wilgen P125	Rev <b>POWER</b> 1.0
Date: Jul 2014	Drawn by: HU32/RS32
Filename: DRS4_Eval_V510.sch	Sheet: 7 of 7

## 6. DRS4 Evaluation Board V5.1 Bill of Materials

Count	ComponentName	RefDes	PatternName	Value	Description
1	24LC128_SN	U38	SO-G8		EEPROM 16k x 8
1	A25L016M	U26	SO-8-SM		Flash Memory, 16Mbit
1	AD8061ART	U22	SOT23-5		Amplifier
3	AD8605ART	U18	SOT23-5		Amplifier
	AD8605ART	U19	SOT23-5		Amplifier
	AD8605ART	U20	SOT23-5		Amplifier
1	AD9245	U21	LFCSP_VQ_32		ADC
4	ADCMP601	U13	SC70-6		Comparator
	ADCMP601	U14	SC70-6		Comparator
	ADCMP601	U15	SC70-6		Comparator
	ADCMP601	U16	SC70-6		Comparator
4	PE4251	U1	MSOP-8-PE		2:1 Mux/SPDT
	PE4251	U3	MSOP-8-PE		2:1 Mux/SPDT
	PE4251	U7	MSOP-8-PE		2:1 Mux/SPDT
	PE4251	U9	MSOP-8-PE		2:1 Mux/SPDT
1	ADR03	U24	SC70-5	2.5V	Ref.
			ASEMP-		
1	ASEMP-3.2X2.5	Q4	3.2X2.5	24.000 MHz	Oszillator
			ASEMP-	100.000	
1	ASEMP-3.2X2.5	Q3	3.2X2.5	MHz	Oszillator
4	BAV99	U28	SOT23-3		Diode
	BAV99	U30	SOT23-3		Diode
	BAV99	U32	SOT23-3		Diode
	BAV99	U34	SOT23-3		Diode
1	CAPP	C138	CAPP	220u	Tantal, >=10V
4	CAP_0402	C51	0402	10n	Capacitor >=10V
	CAP_0402	C52	0402	10n	Capacitor >=10V
	CAP_0402	C55	0402	10n	Capacitor >=10V
	CAP_0402	C56	0402	10n	Capacitor >=10V
19	CAP_0402	C7	0402	100n	Capacitor >=10V
	CAP_0402	C8	0402	100n	Capacitor >=10V
	CAP_0402	C15	0402	100n	Capacitor >=10V
	CAP_0402	C16	0402	100n	Capacitor >=10V
	CAP_0402	C21	0402	100n	Capacitor >=10V
	CAP_0402	C22	0402	100n	Capacitor >=10V
	CAP_0402	C31	0402	100n	Capacitor >=10V
	CAP_0402	C32	0402	100n	Capacitor >=10V
	CAP_0402	C39	0402	100n	Capacitor >=10V
	CAP_0402	C40	0402	100n	Capacitor >=10V
	CAP_0402	C45	0402	100n	Capacitor >=10V
	CAP_0402	C46	0402	100n	Capacitor >=10V
	CAP_0402	C49	0402	100n	Capacitor >=10V
	CAP_0402	C50	0402	100n	Capacitor >=10V
	CAP_0402	C53	0402	100n	Capacitor >=10V
	CAP_0402	C135	0402	100n	Capacitor >=10V
	CAP_0402	C157	0402	100n	Capacitor >=10V
	CAP_0402	C158	0402	100n	Capacitor >=10V
	CAP_0402	C164	0402	100n	Capacitor >=10V
	CAP_0402	C165	0402	100n	Capacitor >=10V
	CAP_0402	C166	0402	100n	Capacitor >=10V
	CAP_0402	C167	0402	100n	Capacitor >=10V
	CAP_0402	C168	0402	100n	Capacitor >=10V
	CAP_0402	C169	0402	100n	Capacitor >=10V
5	CAP_0402	C58	0402	100p	Capacitor >=10V

	CAP_0402	C59	0402	100p	Capacitor	>=10V
	CAP_0402	C60	0402	100p	Capacitor	>=10V
	CAP_0402	C62	0402	100p	Capacitor	>=10V
	CAP_0402	C63	0402	100p	Capacitor	>=10V
24	CAP_0402	C1	0402	220n	Capacitor	>=10V
	CAP_0402	C2	0402	220n	Capacitor	>=10V
	CAP_0402	C3	0402	220n	Capacitor	>=10V
	CAP_0402	C4	0402	220n	Capacitor	>=10V
	CAP_0402	C5	0402	220n	Capacitor	>=10V
	CAP_0402	C6	0402	220n	Capacitor	>=10V
	CAP_0402	C9	0402	220n	Capacitor	>=10V
	CAP_0402	C10	0402	220n	Capacitor	>=10V
	CAP_0402	C13	0402	220n	Capacitor	>=10V
	CAP_0402	C14	0402	220n	Capacitor	>=10V
	CAP_0402	C19	0402	220n	Capacitor	>=10V
	CAP_0402	C20	0402	220n	Capacitor	>=10V
	CAP_0402	C25	0402	220n	Capacitor	>=10V
	CAP_0402	C26	0402	220n	Capacitor	>=10V
	CAP_0402	C27	0402	220n	Capacitor	>=10V
	CAP_0402	C28	0402	220n	Capacitor	>=10V
	CAP_0402	C29	0402	220n	Capacitor	>=10V
	CAP_0402	C30	0402	220n	Capacitor	>=10V
	CAP_0402	C33	0402	220n	Capacitor	>=10V
	CAP_0402	C34	0402	220n	Capacitor	>=10V
	CAP_0402	C37	0402	220n	Capacitor	>=10V
	CAP_0402	C38	0402	220n	Capacitor	>=10V
	CAP_0402	C43	0402	220n	Capacitor	>=10V
	CAP_0402	C44	0402	220n	Capacitor	>=10V
7	CAP_0603	C11	0603	1u	Capacitor	>=10V
	CAP_0603	C12	0603	1u	Capacitor	>=10V
	CAP_0603	C35	0603	1u	Capacitor	>=10V
	CAP_0603	C36	0603	1u	Capacitor	>=10V
	CAP_0603	C76	0603	1u	Capacitor	>=10V
	CAP_0603	C77	0603	1u	Capacitor	>=10V
	CAP_0603	C104	0603	1u	Capacitor	>=10V
1	CAP_0603	C75	0603	4.7n	Capacitor	>=10V
1	CAP_0603	C74	0603	5.6n	Capacitor	>=10V
6	CAP_0603	C23	0603	10n	Capacitor	>=10V
	CAP_0603	C24	0603	10n	Capacitor	>=10V
	CAP_0603	C47	0603	10n	Capacitor	>=10V
	CAP_0603	C48	0603	10n	Capacitor	>=10V
	CAP_0603	C144	0603	10n	Capacitor	>=10V
	CAP_0603	C153	0603	10n	Capacitor	>=10V
2	CAP_0603	C160	0603	15p	Capacitor	>=10V
	CAP_0603	C162	0603	15p	Capacitor	>=10V
1	CAP_0603	C161	0603	39p	Capacitor	>=10V
2	CAP_0603	C91	0603	56p	Capacitor	>=10V
	CAP_0603	C94	0603	56p	Capacitor	>=10V
54	CAP_0603	C54	0603	100n	Capacitor	>=10V
	CAP_0603	C65	0603	100n	Capacitor	>=10V
	CAP_0603	C66	0603	100n	Capacitor	>=10V
	CAP_0603	C67	0603	100n	Capacitor	>=10V
	CAP_0603	C69	0603	100n	Capacitor	>=10V
	CAP_0603	C70	0603	100n	Capacitor	>=10V
	CAP_0603	C71	0603	100n	Capacitor	>=10V
	CAP_0603	C73	0603	100n	Capacitor	>=10V
	CAP_0603	C78	0603	100n	Capacitor	>=10V
	CAP_0603	C82	0603	100n	Capacitor	>=10V
	CAP_0603	C83	0603	100n	Capacitor	>=10V

	CAP_0603	C84	0603	100n	Capacitor	>=10V
	CAP_0603	C85	0603	100n	Capacitor	>=10V
	CAP_0603	C87	0603	100n	Capacitor	>=10V
	CAP_0603	C89	0603	100n	Capacitor	>=10V
	CAP_0603	C90	0603	100n	Capacitor	>=10V
	CAP_0603	C92	0603	100n	Capacitor	>=10V
	CAP_0603	C95	0603	100n	Capacitor	>=10V
	CAP_0603	C96	0603	100n	Capacitor	>=10V
	CAP_0603	C98	0603	100n	Capacitor	>=10V
	CAP_0603	C100	0603	100n	Capacitor	>=10V
	CAP_0603	C102	0603	100n	Capacitor	>=10V
	CAP_0603	C103	0603	100n	Capacitor	>=10V
	CAP_0603	C105	0603	100n	Capacitor	>=10V
	CAP_0603	C106	0603	100n	Capacitor	>=10V
	CAP_0603	C107	0603	100n	Capacitor	>=10V
	CAP_0603	C108	0603	100n	Capacitor	>=10V
	CAP_0603	C109	0603	100n	Capacitor	>=10V
	CAP_0603	C110	0603	100n	Capacitor	>=10V
	CAP_0603	C111	0603	100n	Capacitor	>=10V
	CAP_0603	C112	0603	100n	Capacitor	>=10V
	CAP_0603	C113	0603	100n	Capacitor	>=10V
	CAP_0603	C114	0603	100n	Capacitor	>=10V
	CAP_0603	C115	0603	100n	Capacitor	>=10V
	CAP_0603	C116	0603	100n	Capacitor	>=10V
	CAP_0603	C117	0603	100n	Capacitor	>=10V
	CAP_0603	C118	0603	100n	Capacitor	>=10V
	CAP_0603	C119	0603	100n	Capacitor	>=10V
	CAP_0603	C120	0603	100n	Capacitor	>=10V
	CAP_0603	C121	0603	100n	Capacitor	>=10V
	CAP_0603	C124	0603	100n	Capacitor	>=10V
	CAP_0603	C125	0603	100n	Capacitor	>=10V
	CAP_0603	C126	0603	100n	Capacitor	>=10V
	CAP_0603	C127	0603	100n	Capacitor	>=10V
	CAP_0603	C128	0603	100n	Capacitor	>=10V
	CAP_0603	C129	0603	100n	Capacitor	>=10V
	CAP_0603	C130	0603	100n	Capacitor	>=10V
	CAP_0603	C132	0603	100n	Capacitor	>=10V
	CAP_0603	C133	0603	100n	Capacitor	>=10V
	CAP_0603	C137	0603	100n	Capacitor	>=10V
	CAP_0603	C147	0603	100n	Capacitor	>=10V
	CAP_0603	C150	0603	100n	Capacitor	>=10V
	CAP_0603	C159	0603	100n	Capacitor	>=10V
	CAP_0603	C163	0603	100n	Capacitor	>=10V
1	CAP_0603	C143	0603	100p	Capacitor	>=10V
15	CAP_0805	C79	0805	4.7u	Capacitor	>=10V
	CAP_0805	C86	0805	4.7u	Capacitor	>=10V
	CAP_0805	C93	0805	4.7u	Capacitor	>=10V
	CAP_0805	C99	0805	4.7u	Capacitor	>=10V
	CAP_0805	C101	0805	4.7u	Capacitor	>=10V
	CAP_0805	C134	0805	4.7u	Capacitor	>=10V
	CAP_0805	C140	0805	4.7u	Capacitor	>=10V
	CAP_0805	C145	0805	4.7u	Capacitor	>=10V
	CAP_0805	C146	0805	4.7u	Capacitor	>=10V
	CAP_0805	C148	0805	4.7u	Capacitor	>=10V
	CAP_0805	C149	0805	4.7u	Capacitor	>=10V
	CAP_0805	C151	0805	4.7u	Capacitor	>=10V
	CAP_0805	C152	0805	4.7u	Capacitor	>=10V
	CAP_0805	C154	0805	4.7u	Capacitor	>=10V
	CAP_0805	C156	0805	4.7u	Capacitor	>=10V

16	CAP_1206	C17	1206	10u	Capacitor	>=10V
	CAP_1206	C18	1206	10u	Capacitor	>=10V
	CAP_1206	C41	1206	10u	Capacitor	>=10V
	CAP_1206	C42	1206	10u	Capacitor	>=10V
	CAP_1206	C64	1206	10u	Capacitor	>=10V
	CAP_1206	C68	1206	10u	Capacitor	>=10V
	CAP_1206	C72	1206	10u	Capacitor	>=10V
	CAP_1206	C80	1206	10u	Capacitor	>=10V
	CAP_1206	C81	1206	10u	Capacitor	>=10V
	CAP_1206	C88	1206	10u	Capacitor	>=10V
	CAP_1206	C97	1206	10u	Capacitor	>=10V
	CAP_1206	C122	1206	10u	Capacitor	>=10V
	CAP_1206	C123	1206	10u	Capacitor	>=10V
	CAP_1206	C136	1206	10u	Capacitor	>=10V
	CAP_1206	C141	1206	10u	Capacitor	>=10V
	CAP_1206	C155	1206	10u	Capacitor	>=10V
1	CAP_1206	C139	1206	22u	Capacitor	>=10V
1	CAP_1206	C131	1206	100n	Capacitor	>=10V
1	CAP_1210	C142	1210	47u	Capacitor	>=10V
2	CAP_1210	C57	1210	100u	Capacitor	>=10V
	CAP_1210	C61	1210	100u	Capacitor	>=10V
1	CONN_MOLEX_JTAG_FPGA	J45	DIL14P_2MM	JTAG		
1	CY7C68013-56	U37	SSO-G56		Microcontroller	
1	DRS4_76	U17	QFN-76		DRS4	
2	IND_0603	L14	0603	82nH	Inductor	
	IND_0603	L15	0603	82nH	Inductor	
8	IND_0603	L1	0603	220nH	Inductor	
	IND_0603	L2	0603	220nH	Inductor	
	IND_0603	L3	0603	220nH	Inductor	
	IND_0603	L4	0603	220nH	Inductor	
	IND_0603	L5	0603	220nH	Inductor	
	IND_0603	L6	0603	220nH	Inductor	
	IND_0603	L7	0603	220nH	Inductor	
	IND_0603	L8	0603	220nH	Inductor	
1	IND_1008	L11	1008	10uH	Inductor	
2	IND_1812	L9	1812	10uH	Inductor	
	IND_1812	L10	1812	10uH	Inductor	
2	JMP2MM	JP1	TP50MIL	~WP	Jumper	
	JMP2MM	JP2	TP50MIL	~WP	Jumper	
1	LED_PLCC-4	U39	PLCC-4			
1	LED_PLCC-4	U40	PLCC-4	green		
1	LED_PLCC-4	U41	PLCC-4	yellow		
1	LMZ10503	U43	TO-PMOD-7	TO-PMOD-7		
1	LP2985-2.5	U45	SOT23-5	SOT23-5		
1	LP2985-3.3	U44	SOT23-5	SOT23-5		
1	LTC2600	U23	SSOP16	SSOP16		
1	MAX6662	U25	SO-G8	SO-G8		
4	MCX-90	J18	MCX-90			
	MCX-90	J30	MCX-90			
	MCX-90	J39	MCX-90			
	MCX-90	J41	MCX-90			
4	BAV99s	D1	SOT363		switching diodes	
	BAV99s	D2	SOT363		switching diodes	
	BAV99s	D3	SOT363		switching diodes	
	BAV99s	D4	SOT363		switching diodes	
1	REG1117-1.2	U47	SOT223		REG 1117A	Low Dropout
20	RES_0402	R1	0402	0E	Resistor	
	RES_0402	R3	0402	0E	Resistor	
	RES_0402	R37	0402	0E	Resistor	

	RES_0402	R38	0402	0E	Resistor
	RES_0402	R41	0402	0E	Resistor
	RES_0402	R43	0402	0E	Resistor
	RES_0402	R77	0402	0E	Resistor
	RES_0402	R78	0402	0E	Resistor
	RES_0402	R99	0402	0E	Resistor
	RES_0402	R100	0402	0E	Resistor
	RES_0402	R101	0402	0E	Resistor
	RES_0402	R102	0402	0E	Resistor
	RES_0402	R103	0402	0E	Resistor
	RES_0402	R104	0402	0E	Resistor
	RES_0402	R105	0402	0E	Resistor
	RES_0402	R106	0402	0E	Resistor
	RES_0402	R146	0402	0E	Resistor
	RES_0402	R147	0402	0E	Resistor
	RES_0402	R148	0402	0E	Resistor
	RES_0402	R159	0402	0E	Resistor
8	RES_0402	R11	0402	15E	Resistor
	RES_0402	R12	0402	15E	Resistor
	RES_0402	R19	0402	15E	Resistor
	RES_0402	R20	0402	15E	Resistor
	RES_0402	R51	0402	15E	Resistor
	RES_0402	R52	0402	15E	Resistor
	RES_0402	R59	0402	15E	Resistor
	RES_0402	R60	0402	15E	Resistor
4	RES_0402	R160	0402	16E	Resistor
	RES_0402	R161	0402	16E	Resistor
	RES_0402	R162	0402	16E	Resistor
	RES_0402	R163	0402	16E	Resistor
16	RES_0402	R29	0402	22E	Resistor
	RES_0402	R30	0402	22E	Resistor
	RES_0402	R31	0402	22E	Resistor
	RES_0402	R32	0402	22E	Resistor
	RES_0402	R33	0402	22E	Resistor
	RES_0402	R34	0402	22E	Resistor
	RES_0402	R35	0402	22E	Resistor
	RES_0402	R36	0402	22E	Resistor
	RES_0402	R69	0402	22E	Resistor
	RES_0402	R70	0402	22E	Resistor
	RES_0402	R71	0402	22E	Resistor
	RES_0402	R72	0402	22E	Resistor
	RES_0402	R73	0402	22E	Resistor
	RES_0402	R74	0402	22E	Resistor
	RES_0402	R75	0402	22E	Resistor
	RES_0402	R76	0402	22E	Resistor
4	RES_0402	R5	0402	49.9E	Resistor
	RES_0402	R8	0402	49.9E	Resistor
	RES_0402	R45	0402	49.9E	Resistor
	RES_0402	R48	0402	49.9E	Resistor
8	RES_0402	R7	0402	61.9E	Resistor
	RES_0402	R10	0402	61.9E	Resistor
	RES_0402	R24	0402	61.9E	Resistor
	RES_0402	R28	0402	61.9E	Resistor
	RES_0402	R47	0402	61.9E	Resistor
	RES_0402	R50	0402	61.9E	Resistor
	RES_0402	R64	0402	61.9E	Resistor
	RES_0402	R68	0402	61.9E	Resistor
8	RES_0402	R6	0402	64.9E	Resistor
	RES_0402	R9	0402	64.9E	Resistor



	RES_0402	R23	0402	64.9E	Resistor
	RES_0402	R27	0402	64.9E	Resistor
	RES_0402	R46	0402	64.9E	Resistor
	RES_0402	R49	0402	64.9E	Resistor
	RES_0402	R63	0402	64.9E	Resistor
	RES_0402	R67	0402	64.9E	Resistor
2	RES_0402	R90	0402	100E	Resistor
	RES_0402	R93	0402	100E	Resistor
8	RES_0402	R13	0402	169E	Resistor
	RES_0402	R14	0402	169E	Resistor
	RES_0402	R16	0402	169E	Resistor
	RES_0402	R18	0402	169E	Resistor
	RES_0402	R53	0402	169E	Resistor
	RES_0402	R54	0402	169E	Resistor
	RES_0402	R56	0402	169E	Resistor
	RES_0402	R58	0402	169E	Resistor
8	RES_0402	R2	0402	348E	Resistor
	RES_0402	R4	0402	348E	Resistor
	RES_0402	R39	0402	348E	Resistor
	RES_0402	R40	0402	348E	Resistor
	RES_0402	R42	0402	348E	Resistor
	RES_0402	R44	0402	348E	Resistor
	RES_0402	R79	0402	348E	Resistor
	RES_0402	R80	0402	348E	Resistor
3	RES_0402	R83	0402	390k	Resistor
	RES_0402	R84	0402	390k	Resistor
	RES_0402	R86	0402	390k	Resistor
14	RES_0603	R81	0603	0E	Resistor
	RES_0603	R82	0603	0E	Resistor
	RES_0603	R85	0603	0E	Resistor
	RES_0603	R91	0603	0E	Resistor
	RES_0603	R118	0603	0E	Resistor
	RES_0603	R119	0603	0E	Resistor
	RES_0603	R123	0603	0E	Resistor
	RES_0603	R124	0603	0E	Resistor
	RES_0603	R127	0603	0E	Resistor
	RES_0603	R128	0603	0E	Resistor
	RES_0603	R131	0603	0E	Resistor
	RES_0603	R132	0603	0E	Resistor
	RES_0603	R143	0603	0E	Resistor
	RES_0603	R149	0603	0E	Resistor
5	RES_0603	R94	0603	1k	Resistor
	RES_0603	R95	0603	1k	Resistor
	RES_0603	R97	0603	1k	Resistor
	RES_0603	R117	0603	1k	Resistor
	RES_0603	R155	0603	1k	Resistor
4	RES_0603	R15	0603	1.5E	Resistor
	RES_0603	R17	0603	1.5E	Resistor
	RES_0603	R55	0603	1.5E	Resistor
	RES_0603	R57	0603	1.5E	Resistor
1	RES_0603	R114	0603	2k4	Resistor
2	RES_0603	R139	0603	2.2k	Resistor
	RES_0603	R140	0603	2.2k	Resistor
8	RES_0603	R21	0603	3.6k	Resistor
	RES_0603	R22	0603	3.6k	Resistor
	RES_0603	R25	0603	3.6k	Resistor
	RES_0603	R26	0603	3.6k	Resistor
	RES_0603	R61	0603	3.6k	Resistor
	RES_0603	R62	0603	3.6k	Resistor

	RES_0603	R65	0603	3.6k	Resistor
	RES_0603	R66	0603	3.6k	Resistor
3	RES_0603	R151	0603	4k7	Resistor
	RES_0603	R152	0603	4k7	Resistor
	RES_0603	R153	0603	4k7	Resistor
1	RES_0603	R142	0603	4k7	Resistor
4	RES_0603	R108	0603	4.7E	Resistor
	RES_0603	R109	0603	4.7E	Resistor
	RES_0603	R111	0603	4.7E	Resistor
	RES_0603	R115	0603	4.7E	Resistor
1	RES_0603	R116	0603	10E	Resistor
3	RES_0603	R120	0603	10k	Resistor
	RES_0603	R133	0603	10k	Resistor
	RES_0603	R150	0603	10k	Resistor
2	RES_0603	R110	0603	22E	Resistor
	RES_0603	R112	0603	22E	Resistor
1	RES_0603	R158	0603	22E	Resistor
1	RES_0603	R156	0603	23.7k	Resistor
1	RES_0603	R141	0603	49.9E	Resistor
1	RES_0603	R154	0603	75k	Resistor
1	RES_0603	R113	0603	100E	Resistor
2	RES_0603	R137	0603	100k	Resistor
	RES_0603	R138	0603	100k	Resistor
1	RES_0603	R92	0603	130E	Resistor
2	RES_0603	R144	0603	220E	Resistor
	RES_0603	R145	0603	220E	Resistor
1	RES_0603	R87	0603	390k	Resistor
2	RES_0805	R88	0805	0E	Resistor
	RES_0805	R89	0805	0E	Resistor
2	RES_0805	R107	0805	0E	Resistor
	RES_0805	R136	0805	0E	Resistor
1	RES_0805	R96	0805	1k	Resistor
8	RES_0805	R121	0805	51E	Resistor
	RES_0805	R122	0805	51E	Resistor
	RES_0805	R125	0805	51E	Resistor
	RES_0805	R126	0805	51E	Resistor
	RES_0805	R129	0805	51E	Resistor
	RES_0805	R130	0805	51E	Resistor
	RES_0805	R134	0805	51E	Resistor
	RES_0805	R135	0805	51E	Resistor
1	RES_1206	R157	1206	120E	Resistor
4	SMA_SMD_S	J1	SMA_SMD_S		SMA Connector
	SMA_SMD_S	J2	SMA_SMD_S		SMA Connector
	SMA_SMD_S	J4	SMA_SMD_S		SMA Connector
	SMA_SMD_S	J5	SMA_SMD_S		SMA Connector
1	SN74LVC1G04	U5	PDSO-G5		Inverter
1	SN74LVC1G17	U48	SC70-5		Buffer
4	SN74LVC1T45DB	U27	SOT23-6		Bus Transceiver
	SN74LVC1T45DB	U29	SOT23-6		Bus Transceiver
	SN74LVC1T45DB	U31	SOT23-6		Bus Transceiver
	SN74LVC1T45DB	U33	SOT23-6		Bus Transceiver
4	THS4508	U2	QFN-16		Amplifier
	THS4508	U4	QFN-16		Amplifier
	THS4508	U8	QFN-16		Amplifier
	THS4508	U10	QFN-16		Amplifier
1	TPS79625	U46	SOT223-5		Low Dropout
1	USB_CONN_B	U35	USB_CONN_B		
1	XC3S400-TQ144	U36	TQFP144		FPGA
1	XCF02S-V020	U42	TSSOP20		EEPROM

