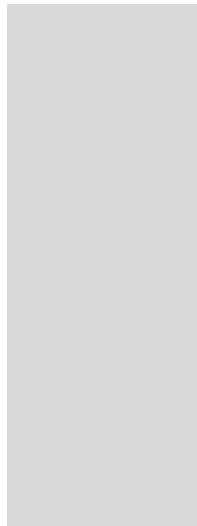


PAUL SCHERRER INSTITUT



## PSI Career Mail



PSI Career Center – Training. Career. Happiness.

Dear reader

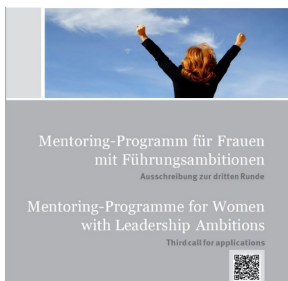
I am happy to send you the new edition of the PSI career mail.

This year's autumn has started already in Switzerland – the air is cooler and the leaves take on colors. For starting your job hunt or in regard of your New Year's resolutions, this is a great time of the year.

Have a look at all the hints in this newsletter.

Enjoy reading,  
Yvonne

## Spotlight on...



### **Mentoring-Programme for Women with Leadership Ambitions**

CALL FOR APPLICATIONS!

Would you like to take on a leadership role at PSI or another institution in the future? Would you like to gain deeper insights into the topic of leadership?

Then apply for the programme now.

**Application deadline: 17. October 2021**

Duration of Programme: February '22 – February '23 Further information about the programme and the required application documents:

<https://intranet.psi.ch/en/chancengleichheit/mentoring-psi>



Exciting career events with the international consulting company:

**PhD Connect - Learn about opportunities for PhD graduates in Life Science consulting**

- **Date:** Thursday, November 4, 18:00- 19:30h, Zoom
- **Recommended text:** Are you currently doing a PhD in Life Sciences? Whether you just started or graduating, soon join our session to learn more about opportunities for PhD graduates in consulting! You ask, we answer!
- This is a relaxed event starting with a short introduction to McKinsey Life Sciences, followed by a Q&A where you can ask all your questions.
- **Register by Monday, November 1:** [www.mckinsey.com/PhDConnect](http://www.mckinsey.com/PhDConnect)

Please, also check out:

**15 October:** Career Livestream “[Discover Life Science Consulting at McKinsey](#)”

**29 October:** Case Workshop for [STEM students](#)

**25/26 November** (Lucerne): [#aplaceforyou Switzerland - Women Event](#)

(PSI) Career Events – learning, networking, fun...



More details: <https://intranet.psi.ch/en/pa/career-events>

**LinkedIn & Xing**

How to use LinkedIn & Xing (or other social media) for your job search

**21 October 2021 – 5pm** (virtual by Zoom)

[Registration](#) (open until 20 October 2021)

*Open to all PSI employees.*

## PSI Education Center – training, webinars, workshops



PSI Education Center offers some online courses to consider ongoing Corona restrictions and to respect the safety and security of course participants. Check the list of all courses [here](#).

## Call from academia



**ETH Zurich – Assistant Professor of Membrane and Lipid Biology / Assistant Professor of Soft Matter Biology**

The Department of Biology ([www.biol.ethz.ch](http://www.biol.ethz.ch)) at ETH Zurich invites applications for **two Assistant Professorships** at the Institute of Biochemistry ([www.bc.biol.ethz.ch](http://www.bc.biol.ethz.ch)) in 1) Membrane and Lipid Biology and 2) Soft Matter Biology.

The **Assistant Professor of Membrane and Lipid Biology** should have a solid background in molecular and quantitative approaches to address fundamental questions in the broad areas of lipid and membrane biology. She or he is expected to apply and combine various new methods, such as lipid- and metabolomics, protein analytics, next generation DNA and RNA sequencing, genome engineering via CRISPR/Cas9-based technologies, controlled perturbations, single cell analytical tools, proteomics, or imaging methods.

The **Assistant Professor of Soft Matter Biology** should have an excellent track record at the interfaces of biophysics and material sciences with cellular and

molecular biology or related fields. She or he is expected to address topics such as the assembly, organization, function and regulation of membrane-less organelles, probing and characterizing the material properties of super-molecular assemblies and bio-condensates in vivo and in vitro, how low affinity molecular interactions determine the emerging material properties of soft biomaterials or characterizing the super-molecular organization of biological materials from a structural perspective.

**Deadline: 31 October 2021**

[More information](#)

## **BRIDGE** For young researchers: Proof of Concept

Have you **earned your spurs as a young researcher** and come up with an **idea for developing your research** results into a marketable product? And are you looking for an opportunity to test and refine your idea. Then BRIDGE Proof of Concept is just what you are looking for.

BRIDGE Proof of Concept **helps young researchers to apply their research results** and gain the confidence needed to make a market entry. The projects may target innovations of all kinds from all research areas.

[More details](#)

Industry is looking for...



- Novartis – [Research Scientist II, Radiochemistry \(80-100%\)](#) – Basel
- University of Basel – [Project Lead, Innovation Office](#) (several positions; 30-100%) – Basel
- Volkswagen – [Hardware Konzeptentwickler/in für Batteriemanagementsysteme](#) – Braunschweig
- Dectris – [Application Scientist Electron Microscopy Materials Science](#) – Baden-Dättwil
- Safran Vectronix AG – [Physicist/Development Engineer Optics](#) – Heerbrugg

## PSI Career Mail



The PSI Career Mail addresses mainly PhD and Postdocs. It shares news about job opportunities (academia and industry), career & networking events, ideas regarding your career development and others.

The PSI Career Mailing is sent out about once a month or upon need.

To unsubscribe from this list, please click on this [email](#).

Subscriptions can also be terminated by logging in to [Sympa](#), clicking on "subscription" or "Abbestellen" on the left hand side and following the respective instructions.

## IMPRESSUM

**Content created by**  
Yvonne Müller,  
Projektleiterin  
Career Center / CONNECT

**Paul Scherrer Institut**  
OSGA/EG04  
Forschungsstrasse 111  
5232 Villigen PSI

Phone: +41 56 310 42 90  
E-Mail: [careercenter@psi.ch](mailto:careercenter@psi.ch)